

### Shelters and Enclosures

**FINISH:**

- ANODIZED CLEAR (SILVER)
- ANODIZED DARK BRONZE

**ROOF STYLE:**

- BARREL
- GABLE
- HIP

**ROOF MATERIALS:**

- TWIN WALL POLYCARBONATE
  - BRONZE TINTED
  - WHITE
  - CLEAR
- STANDING SEAM (HIP OR GABLE ONLY)\*
  - BLACK
  - DOVE GREY

**WALL PANELS:**

- 1/4" TEMPERED GLASS
- STAINLESS STEEL WIRE MESH \*
- ENDUREX 300 \*
  - SILVER
  - BLACK

**GARAGE DOOR COLOR:**

- GALVALUME (SILVER GRAY)
- OPTIONAL COLOR \_\_\_\_\_  
 (SEE OUR SPEC. SHEET FOR AVAILABLE COLORS)

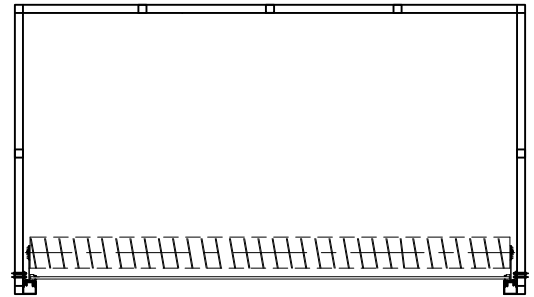
**OPTIONAL: \***

- SOLAR LIGHTING
- SOLAR CELL PHONE/LAPTOP CHARGER
- GEOKEY APP BASED PADLOCK
- CUSTOM GRAPHICS/SIGNAGE
- BOTTOM CLOSURE PANELS

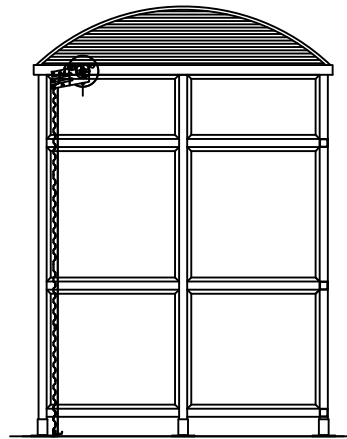
**PROFESSIONAL ENGINEERING REPORT: \***

- ACCEPTED
- DECLINED

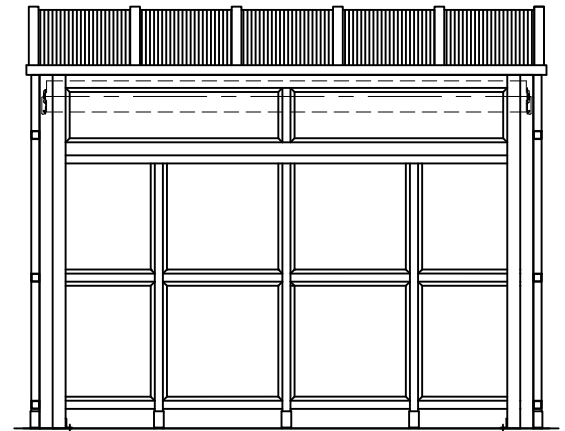
\* = ADDITIONAL CHARGES



PLAN VIEW



SIDE ELEVATION



FRONT ELEVATION

**SPECIFICATIONS**

**MATERIAL:** 6063-T52 ALLOY ALUMINUM

**ROOF:** TWIN WALL, 6MM POLYCARBONATE; UV PROTECTION OR STANDING SEAM ALUMINUM

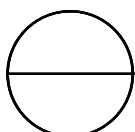
**WALL PANELS:** 1/4" TEMPERED GLASS, ENDURAX 300, OR STAINLESS STEEL WIRE MESH

**DIMENSIONS:** 13'-9" L X 7'-5" W X 10' H

**DOOR:** CORRUGATED STEEL

**NOTES:**

1. SEE MANUFACTURER FOR COLOR OPTIONS. (CUSTOM COLORS AVAILABLE)
2. INSTALLATION TO BE COMPLETED IN ACCORDANCE WITH MANUFACTURER'S SPECIFICATIONS.
3. DO NOT SCALE DRAWING.
4. THIS DRAWING IS INTENDED FOR USE BY ARCHITECTS, ENGINEERS, CONTRACTORS, CONSULTANTS AND DESIGN PROFESSIONALS FOR PLANNING PURPOSES ONLY. THIS DRAWING MAY NOT BE USED FOR CONSTRUCTION.
5. ALL INFORMATION CONTAINED HEREIN WAS CURRENT AT THE TIME OF DEVELOPMENT BUT MUST BE REVIEWED AND APPROVED BY THE PRODUCT MANUFACTURER TO BE CONSIDERED ACCURATE.
6. CONTRACTOR'S NOTE: FOR PRODUCT AND COMPANY INFORMATION VISIT [www.CADdetails.com/info](http://www.CADdetails.com/info) AND ENTER REFERENCE NUMBER 5001-045.



**LOCKING SHELTER**

PREFAB UTILITY GARAGE