

### Handi-Hut's Prefab Utility Garage

is a compact, outdoor equipment enclosure that is a better alternative to cheap metal sheds and garages sold online and in stores. Ideal for storing property maintenance equipment, supplies, and bikes. Compare to any on the market!

- Prefabricated for quick, low-cost assembly
- Produced in heavy-duty aluminum. Rustproof.
- 12' wide steel overhead door
- Wide selection of roof styles, colors, and wall panels
- Security- Mechanical padlock or Geokey app-based smart lock (not included)
- Engineered to meet strict building codes
- Customizable



PreFab Utility Garage with Black Endurex Panels

© Copyright 2022 Handi-Hut Inc. All Rights Reserved

### GENERAL INFORMATION

**Frame:** 6063-T52 Alloy Aluminum fabricated with Integrated Water Drainage

**Finish:** Anodized Dark Bronze or Clear (Silver)

**Roof Styles/Materials:**

**HIP ROOF:** 6 mm Twinwall Polycarbonate, UV Coated or Standing Seam Aluminum

**GABLE ROOF:** 6 mm Twinwall Polycarbonate, UV Coated or Standing Seam Aluminum

**BARREL ROOF:** 6 mm Twinwall Polycarbonate, UV Coated

**Wall Panels:** Tempered Glass, Endurax 300, Silver or Black or Stainless-Steel Wire Mesh, 2" Sq. Grid

**Roll-Up Door:** 12' L x 7' H

■ Silver Galvalume® (55% Al-Zn alloy coated)

**Security:** Mechanical Padlock or GioLock – not included

**Installation:** Anchor securely to level concrete pad

### DIMENSIONS/CAPACITY

Prefab Utility Garage	Length	Width	Height
	13' 9"	7' 5"	11'

Custom Sizes Available

### VIEWS

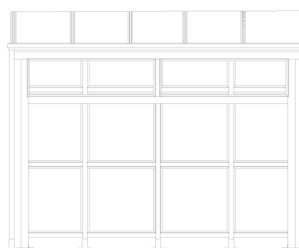


TOP

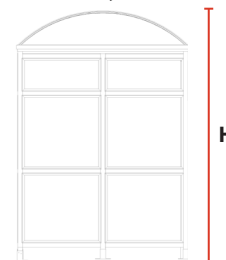


ISOMETRIC

(Cut away view)



L



W

H



PreFab Utility Garage with Stainless Steel Wire Mesh Panels



PreFab Utility Garage with Tempered Glass Panels

### OPTIONS/ACCESSORIES

- Bottom Enclosure Panels
- Custom Branding, Graphics and Signage
- Solar Lighting
- Solar Cell Phone / Laptop Charger
- Public Bike Repair Accessories
- Powder Coating in RAL or Custom Colors
- GeoKey App Based Padlock

### FRAME FINISHES

Anodized Aluminum, 6063-T52 Alloy (Standard)



Dark Bronze Clear (Silver)

Powder Coating Available Upon Request (additional cost)

### BOTTOM ENCLOSURE PANELS



Aluminum panels inset at toe kick, inhibit debris, leaves and snow from entering shelter. Helps to minimize maintenance. Color may vary from frame.

### OVERHEAD ROLL UP DOOR

Optional Colors Available



Bronze Cedar Red Continental Brown Desert Sand

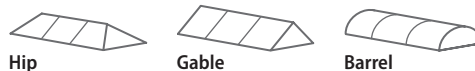


Desert Tan High Gloss White LG (Forest) Green Light Stone



Sandstone Satin White Silhouette Gray

### ROOF

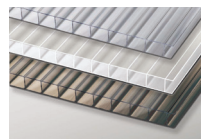


Hip

Gable

Barrel

6mm Twinwall Polycarbonate, UV Coated



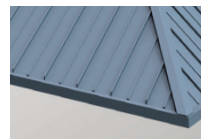
Translucent sheets with ribbed core. Impact resistant and light weight.

**White** (45% Light Transmission)

**Bronze Tint** (45% Light Transmission)

**Clear** (80% Light Transmission)

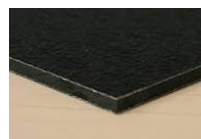
Standing Seam Aluminum / Roof: **HIP | GABLE**



Finished aluminum panels with ribbed profile are exceptionally durable, Rustproof, fade resistant and easy to maintain. Colors available.

### WALL PANELS

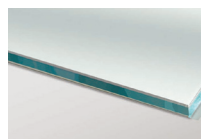
Endurex 300



Features Aluminum on both sides of a solid thermoplastic core. Endurex 300 combines all the best features of moisture and impact resistance with excellent rigidity.

**Black or Silver**

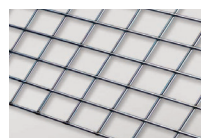
1/4" Tempered Glass, Clear



**Standard version**

Tempered glass is stronger and safer than regular glass. It is also shatterproof.

3/16" Stainless Steel Wire Mesh



**Bike Cage version**

Stainless steel wire mesh for indoor/outdoor use is durable and attractive. 2" square grid for a contemporary look.