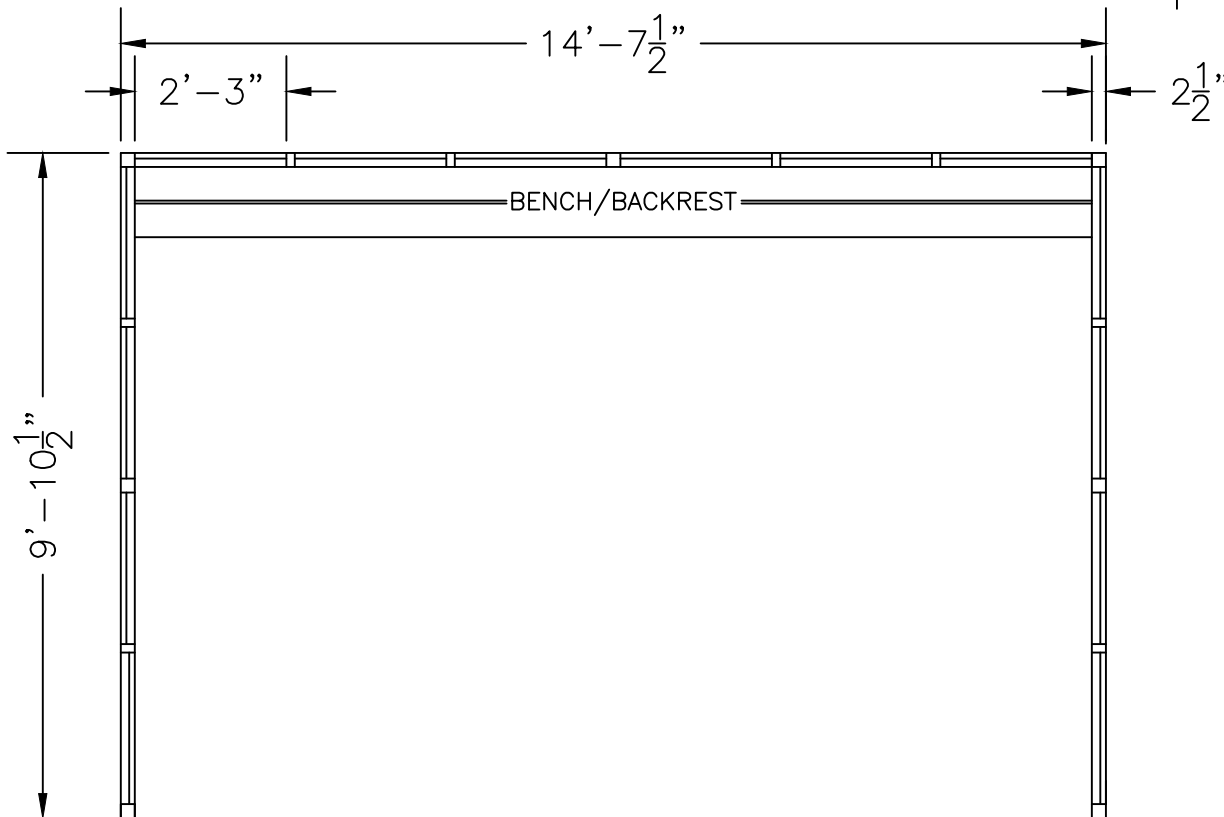
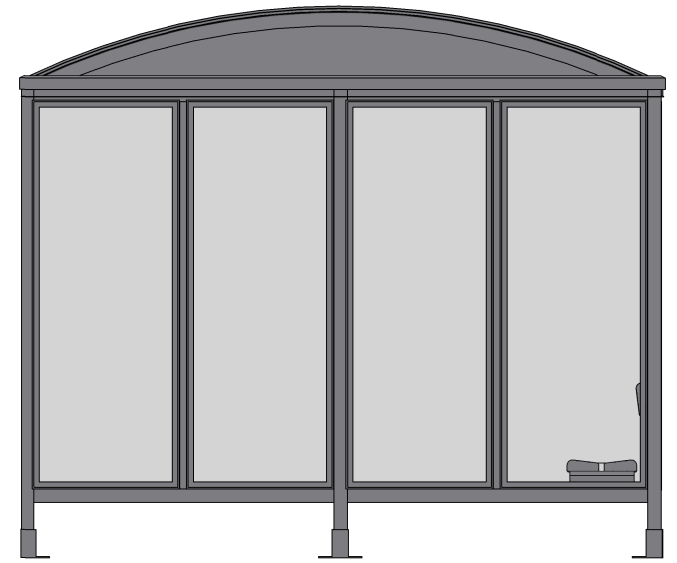
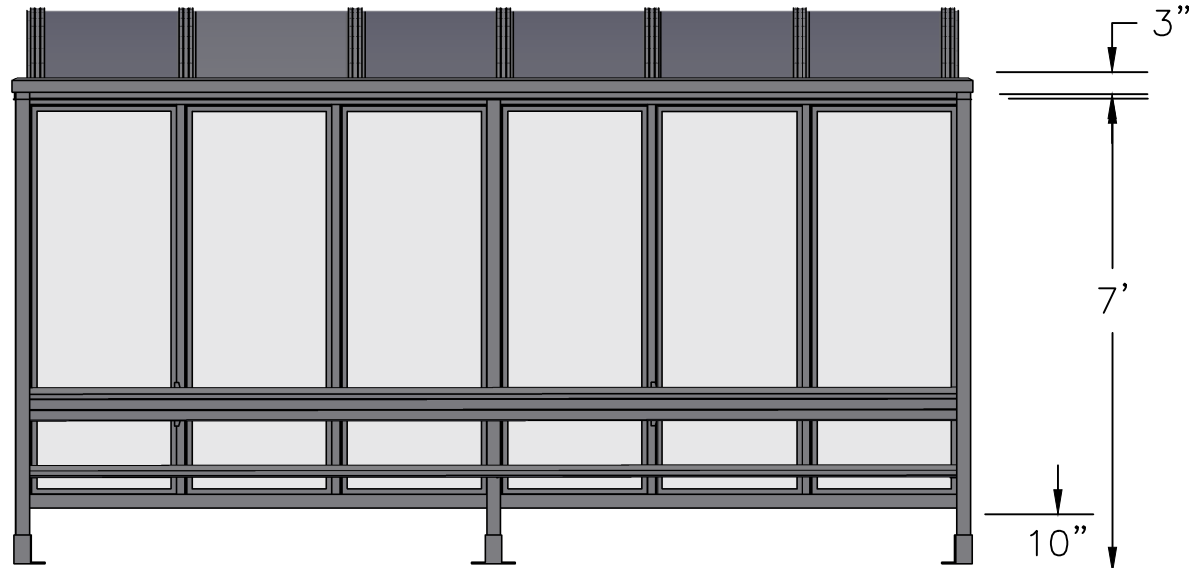


SCALE=1:25

MODEL #6-4B  
ACCOMMODATES 12-14

**Handi-Hut**<sup>®</sup>

3 Grunwald St. Clifton, NJ  
07013  
Tel: 973-614-1800  
www.handi-hut.com



RECOMMENDED PAD SIZE-16'-6" X 12'-0" X 6" THICK MINIMUM

SCALE=1:35

MODEL #6-4B  
ACCOMMODATES 15-18

14'-7 1/2" X 9'-10 1/2" BARREL ROOF  
PASSENGER/SMOKING SHELTER  
OPEN FRONT

ALUMINIUM: 6063-T52  
AVAILABLE FINISHES: DARK BRONZE ANODIZED  
CLEAR ANODIZED  
CUSTOM COLOR POWDER-COAT  
GLAZING: 1/4" CLEAR TEMPERED GLASS  
ROOF PANELS: 1/4" BRONZE OR CLEAR TWIN WALL  
POLYCARBONATE  
BENCH/BACKREST: EXTRUDED ALUMINIUM

**Handi-Hut®**

3 Grunwald St. Clifton, NJ  
07013  
Tel: 973-614-1800  
www.handi-hut.com