

**Town & Country** is a distinctive bike shelter that provides a safe harbor for parking bikes. Enclosed on a 3 sides with analuminum railing, it has a six foot wide aisle, available with anentrance in the middle or on each end. Mix & match colors, add custom branding or top it off with a cupola for a touch of flair.  
Class 2 Bike Shelter: Canopy Style

- Creates organize bike parking
- Versatile, modular construction
- Standing Seam Gable or translucent Barrel Roof
- Concealed rain gutters



© Copyright 2022 Handi-Hut Inc. All Rights Reserved

### GENERAL INFORMATION

**Frame:** 6063-T52 Alloy Aluminum fabricated with Intergrated Water DraJnage  
**Finish:** Anodized  Dark Bronze or  Clear (Silver)  
**Wall Section:** Commercial Grade Fence Panels Roof Styles/Materials:  
**BARREL ROOF:** 6mm Twinwall Polycarbonate, UV Coated  
**GABLE ROOF:** 6mm Twinwall Polycarbonate, UV Coated or Standing Seam Aluminum  
**Installation:** Anchor Securely to level, concrete pad  
**Bike Racks:** Not included

### DIMENSIONS/CAPACITY

Town & Country	Length	Width	Height	Capacity
Single	14'-7 1/2"	12'-4"	7'	10
Double	21'-8"	12'-4"	7'	20

### OPTIONS/ACCESSORIES

- Custom Branding, Graphics and Signage
- Solar Lighting
- Public Bike Repair Accesories
- Powder Coating In RAL or Custom Colors

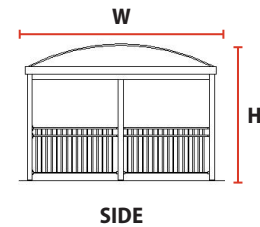
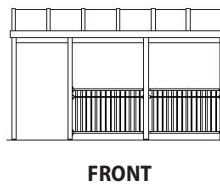
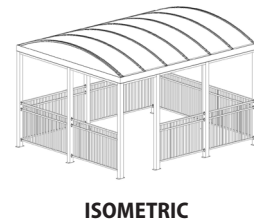
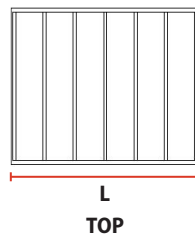
### FRAME FINISHES

Anodized Aluminum, 6063-T52 Alloy (Standard)

Dark Bronze Clear (Silver)

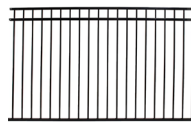
Powder Coating available upon request (additional cost)

### VIEWS



### WALL SECTIONS

Commercial Grade Fence Panel



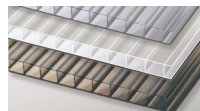
Finished aluminum fence panels. Exceptionally durable, rustproof, fade resistant and easy to maintain. Colors available:



\* All colors available inSatin (textured) Style

### ROOF PANELS

6mm Twinwall Polycarbonate- UV Coated/**Roof: BARREL I HIP**



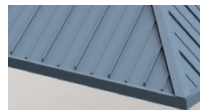
Translucent sheets with ribbed core. Impact resistant and light weight

**Clear** (80% Light Transmission)

**White** (45% Light Transmission)

**Bronze Tint** (45% Light Transmission)

Standing Seam Aluminum / **Roof: HIP | GABLE**



Finished aluminum panels with ribbed profile.

Exceptionally durable, rustproof, fade resistant and easy to maintain. Colors available.