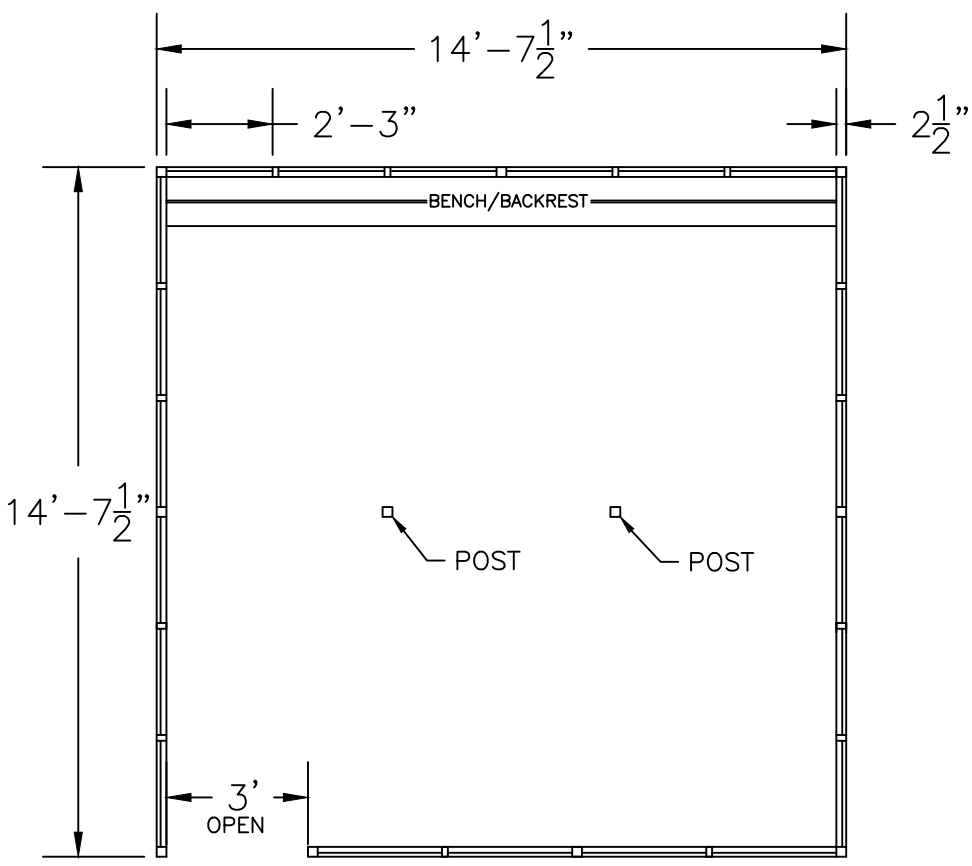
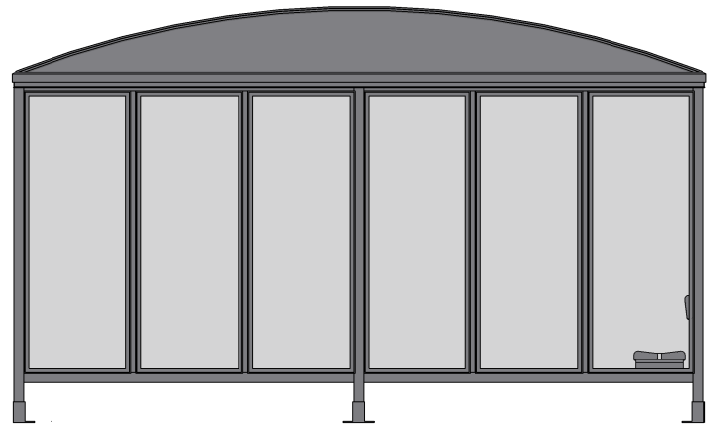
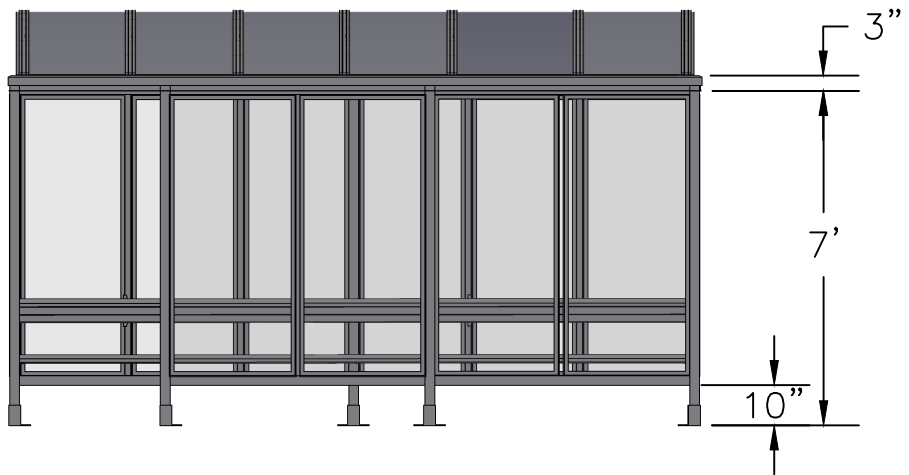


SCALE=1:30

MODEL #S6-6B  
ACCOMMODATES 24-28

**Handi-Hut®**

3 Grunwald St. Clifton, NJ  
07013  
Tel: 973-614-1800  
www.handi-hut.com



RECOMMENDED PAD SIZE-16'-6" X 16'-6" X 6" THICK MINIMUM

SCALE=1:50

<p>MODEL #S6-6B ACCOMMODATES 24-28</p>	
<p>14'-7 1/2" X 14'-7 1/2" BARREL ROOF PASSENGER/SMOKING SHELTER FRONT LEFT OPENING</p>	
<p>ALUMINIUM: 6063-T52 AVAILABLE FINISHES: DARK BRONZE ANODIZED CLEAR ANODIZED CUSTOM COLOR POWDER-COAT GLAZING: 1/4" CLEAR TEMPERED GLASS ROOF PANELS: 1/4" BRONZE OR CLEAR TWIN WALL POLYCARBONATE BENCH/BACKREST: EXTRUDED ALUMINIUM</p>	
	<p>3 Grunwald St. Clifton, NJ 07013 Tel: 973-614-1800 www.handi-hut.com</p>