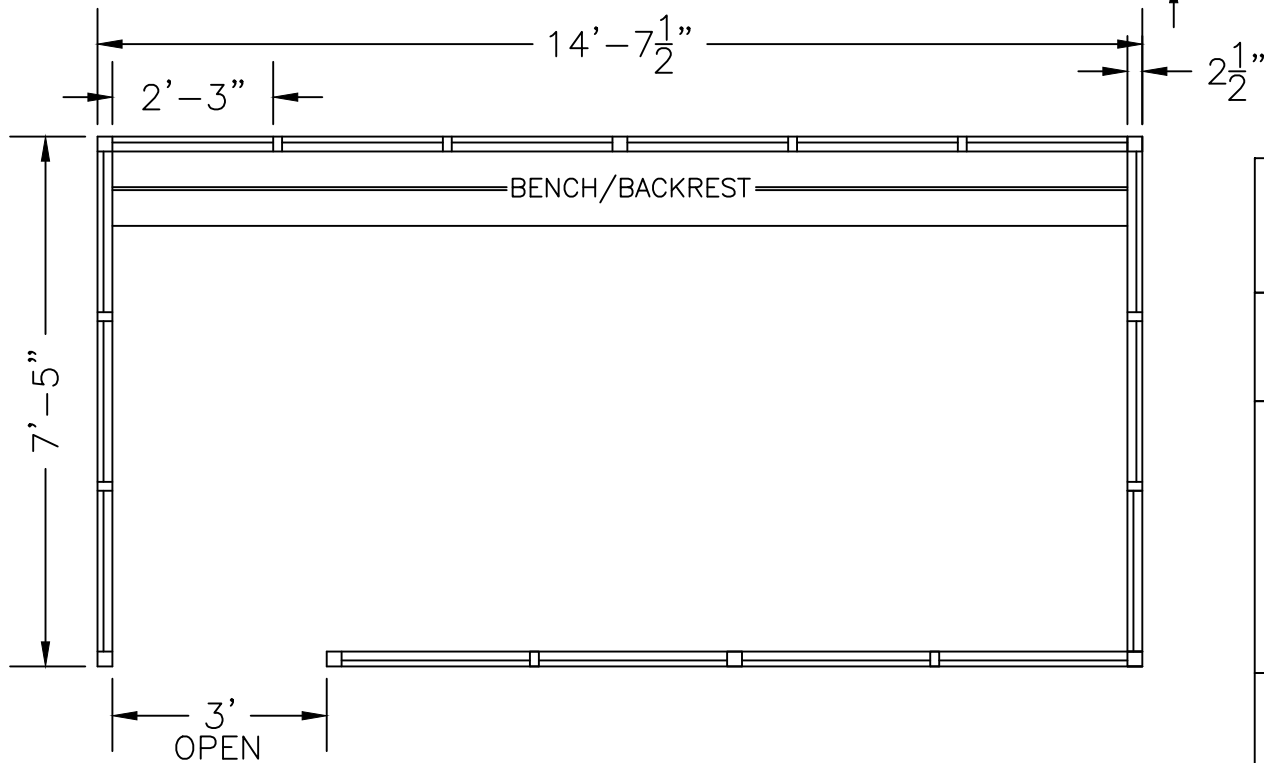
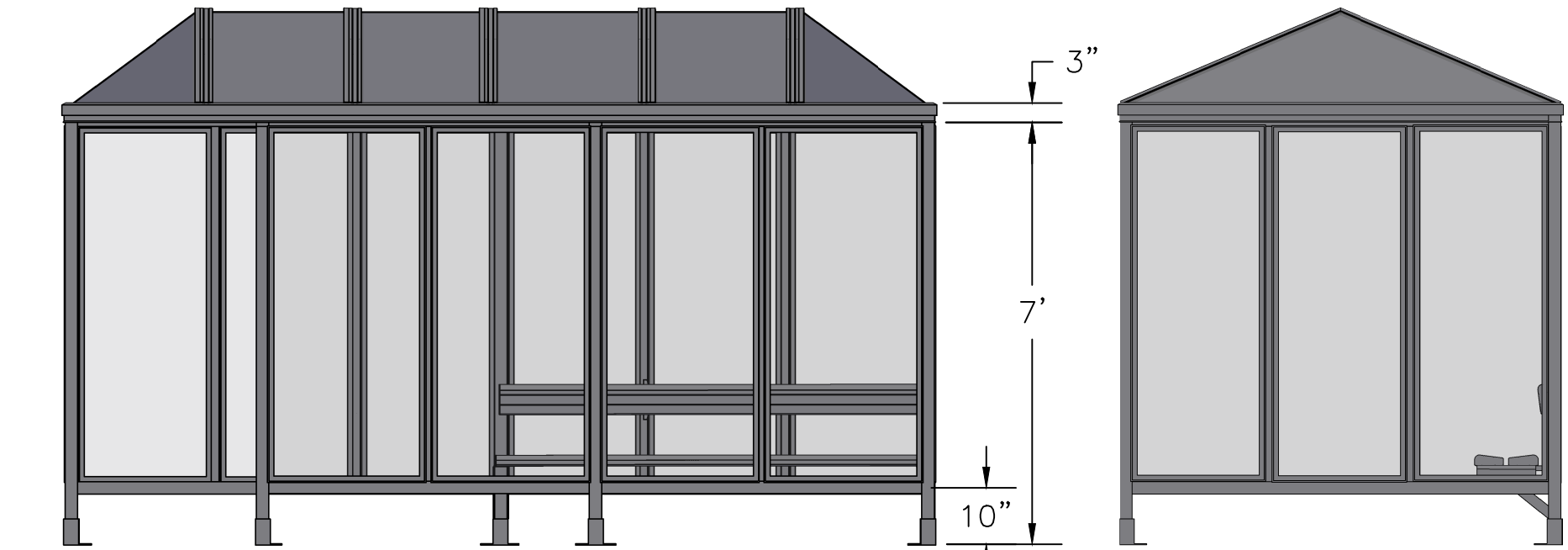


SCALE=1:25

MODEL #S6-3PH  
ACCOMMODATES 12-14


**Handi-Hut**<sup>®</sup>

3 Grunwald St. Clifton, NJ  
07013  
Tel: 973-614-1800  
www.handi-hut.com



RECOMMENDED PAD SIZE-16'-6" X 9'-6" X 6" THICK MINIMUM

SCALE=1:33

|  |   |
|--|---|
| <p>MODEL #S6-3PH<br/>ACCOMMODATES 12-14</p>  |   |
| <p>14'-7 1/2" X 7'-5" POLY-HIP ROOF<br/>PASSENGER/SMOKING SHELTER<br/>FRONT LEFT OPENING</p>   |   |
| <p>ALUMINIUM: 6063-T52<br/>AVAILABLE FINISHES: DARK BRONZE ANODIZED<br/>CLEAR ANODIZED<br/>CUSTOM COLOR POWDER-COAT</p>                            |   |
| <p>GLAZING: 1/4" CLEAR TEMPERED GLASS<br/>ROOF PANELS: 1/4" BRONZE OR CLEAR TWIN WALL<br/>POLYCARBONATE<br/>BENCH/BACKREST: EXTRUDED ALUMINIUM</p> |   |
|   | <p>3 Grunwald St. Clifton, NJ<br/>07013<br/>Tel: 973-614-1800<br/>www.handi-hut.com</p> |