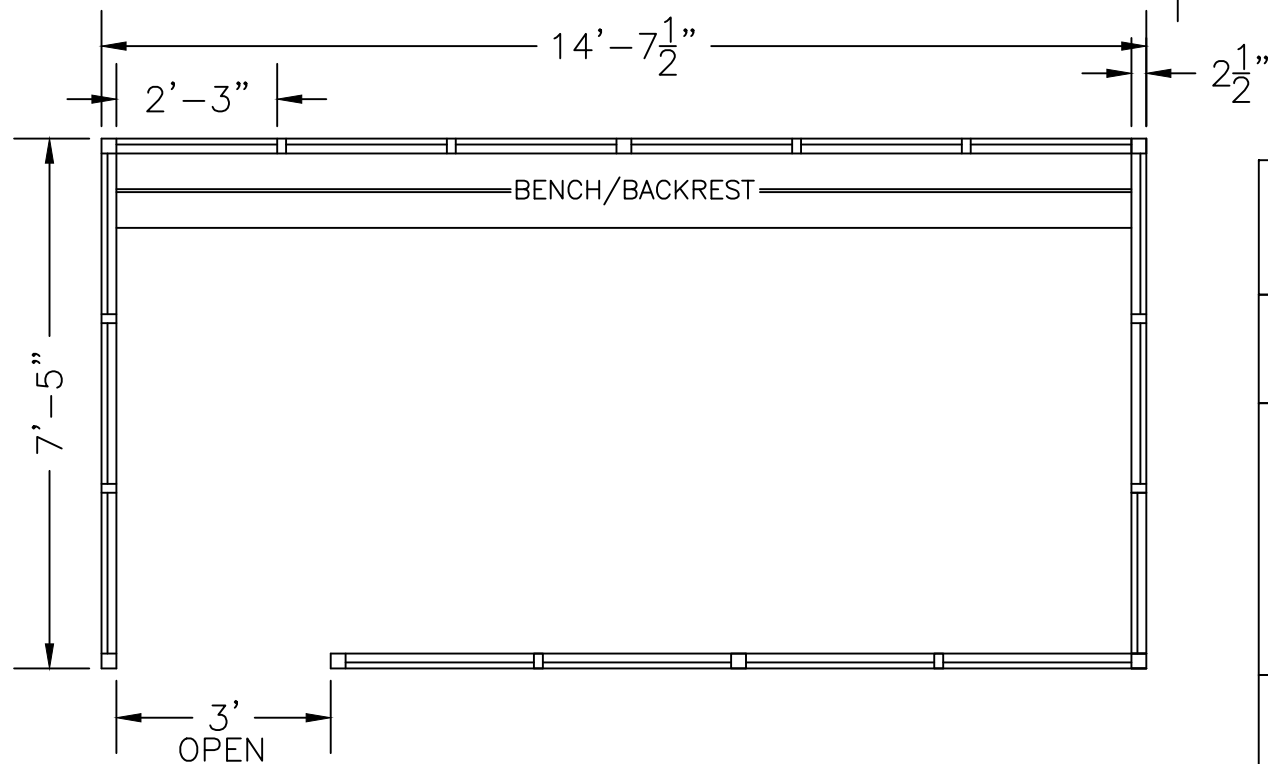
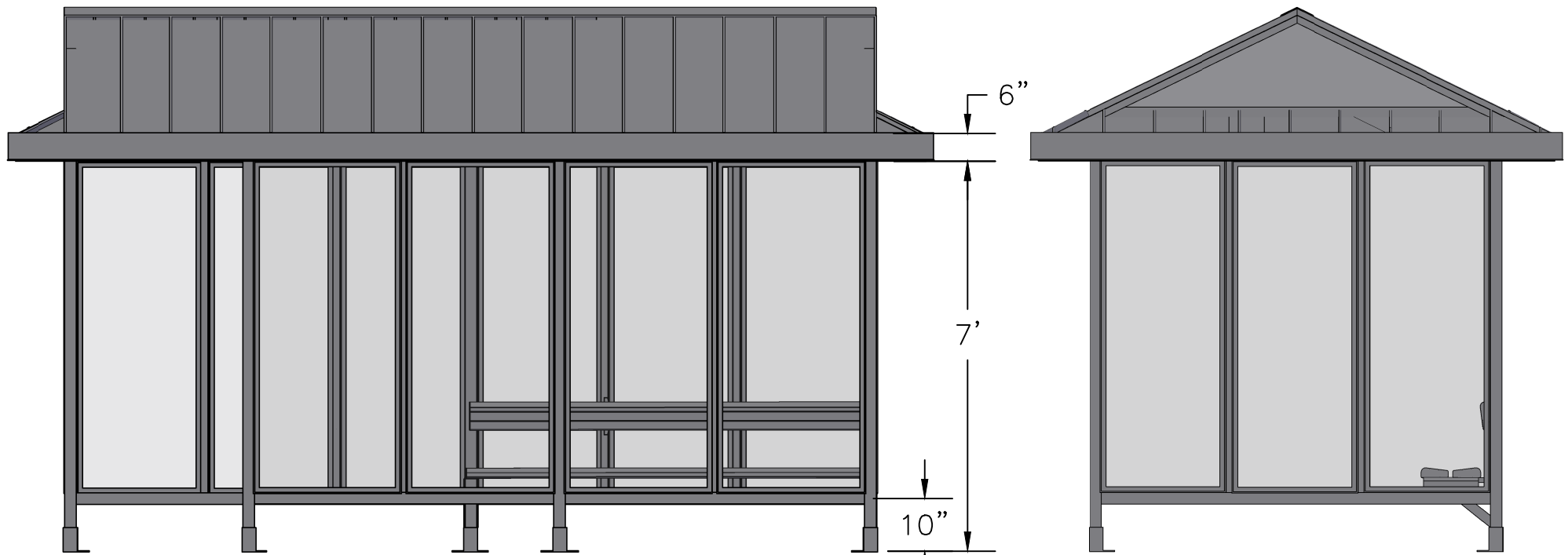


SCALE=1:25

MODEL #S6-3H ACCOMMODATES 12-14	
Handi-Hut [®]	3 Grunwald St. Clifton, NJ 07013
	Tel: 973-614-1800
	www.handi-hut.com



RECOMMENDED PAD SIZE-16'-6" X 9'-6" X 6" THICK MINIMUM

SCALE=1:33

MODEL #S6-3H
ACCOMMODATES 12-14

14'-7 1/2" X 7'-5" HISTORICAL ROOF
PASSENGER/SMOKING SHELTER
FRONT LEFT OPENING

ALUMINIUM: 6063-T52
AVAILABLE FINISHES: DARK BRONZE ANODIZED
CLEAR ANODIZED
CUSTOM COLOR POWDER-COAT
GLAZING: 1/4" CLEAR TEMPERED GLASS
ROOF PANELS: 11" ATAS DUTCH SEAM DECKING
BLACK KYNAR FINISH
BENCH/BACKREST: EXTRUDED ALUMINIUM

Handi-Hut[®]

3 Grunwald St. Clifton, NJ
07013
Tel: 973-614-1800
www.handi-hut.com