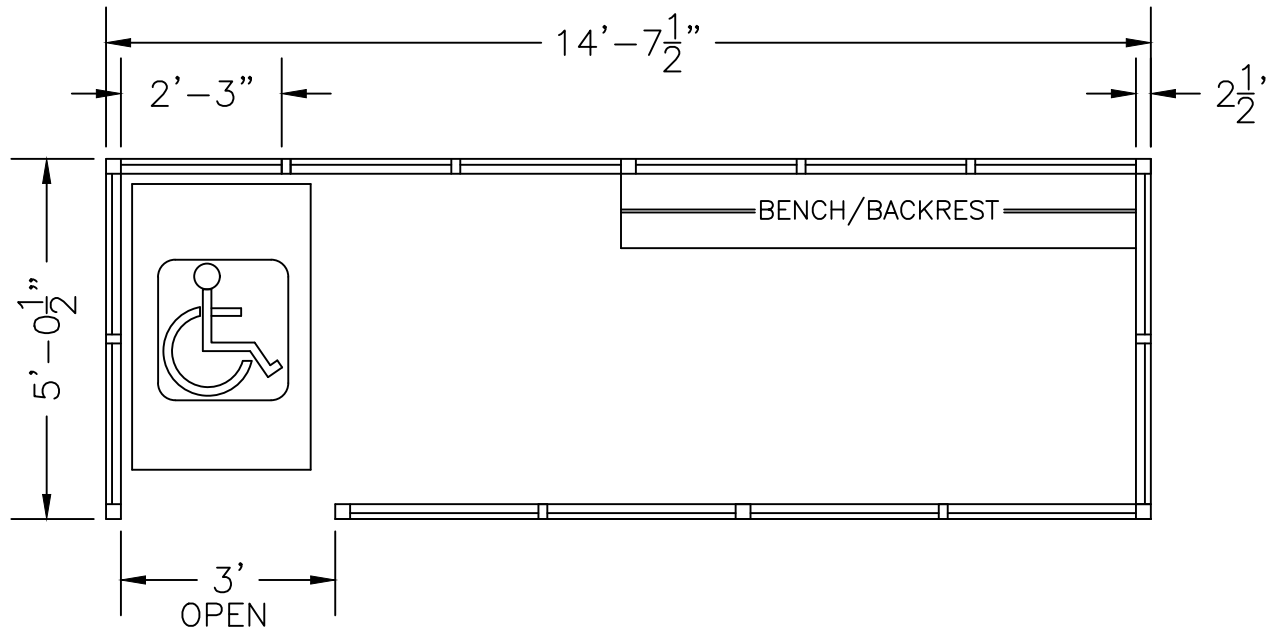
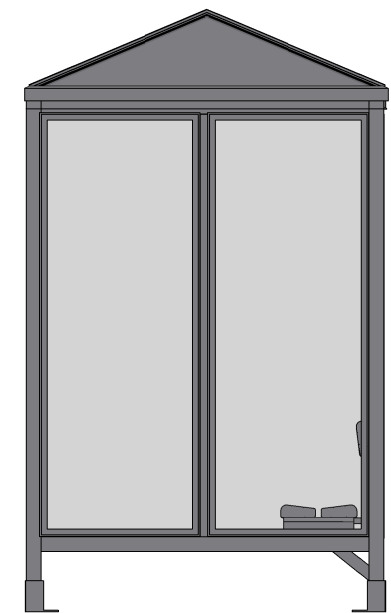
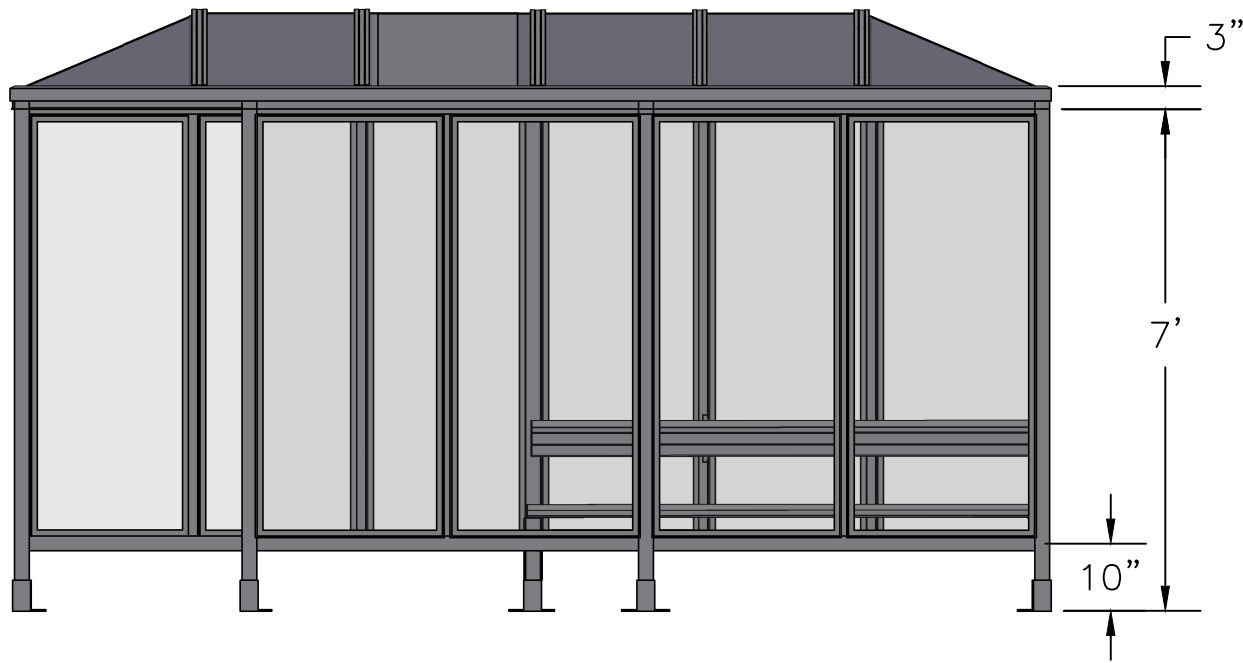


SCALE=1:25

MODEL #S6-2PH  
ACCOMMODATES 8-9

**Handi-Hut**<sup>®</sup>

3 Grunwald St. Clifton, NJ  
07013  
Tel: 973-614-1800  
www.handi-hut.com



SCALE=1:33

MODEL #S6-2PH  
ACCOMMODATES 8-9

15' X 5' POLY-HIP ROOF  
PASSENGER/SMOKING SHELTER  
FRONT LEFT OPENING

ALUMINIUM: 6063-T52  
AVAILABLE FINISHES: DARK BRONZE ANODIZED  
CLEAR ANODIZED  
CUSTOM COLOR POWDER-COAT  
GLAZING: 1/4" CLEAR TEMPERED GLASS  
ROOF PANELS: 1/4" BRONZE OR CLEAR TWIN WALL  
POLYCARBONATE  
BENCH/BACKREST: EXTRUDED ALUMINIUM



3 Grunwald St. Clifton, NJ  
07013  
Tel: 973-614-1800  
www.handi-hut.com

RECOMMENDED PAD SIZE-16'-6" X 7'-0" X 6" THICK MINIMUM