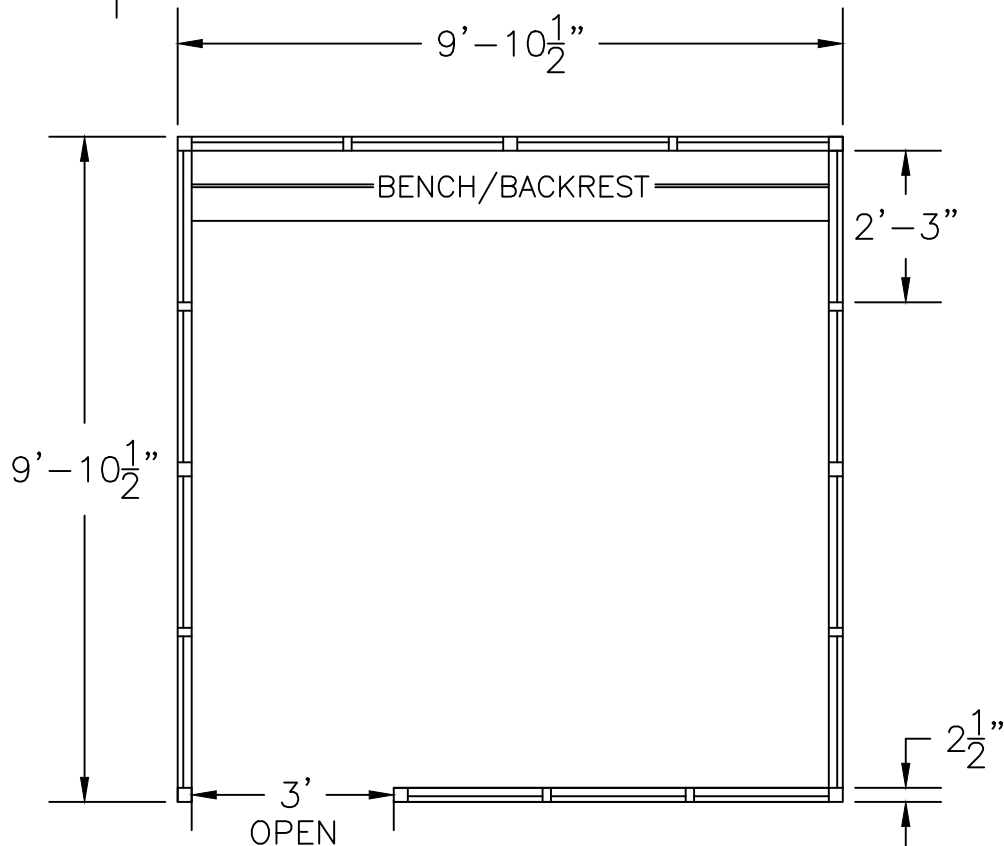
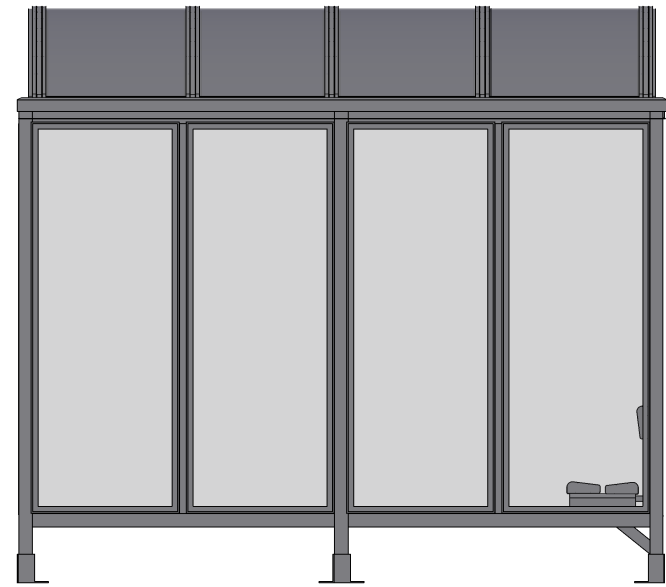
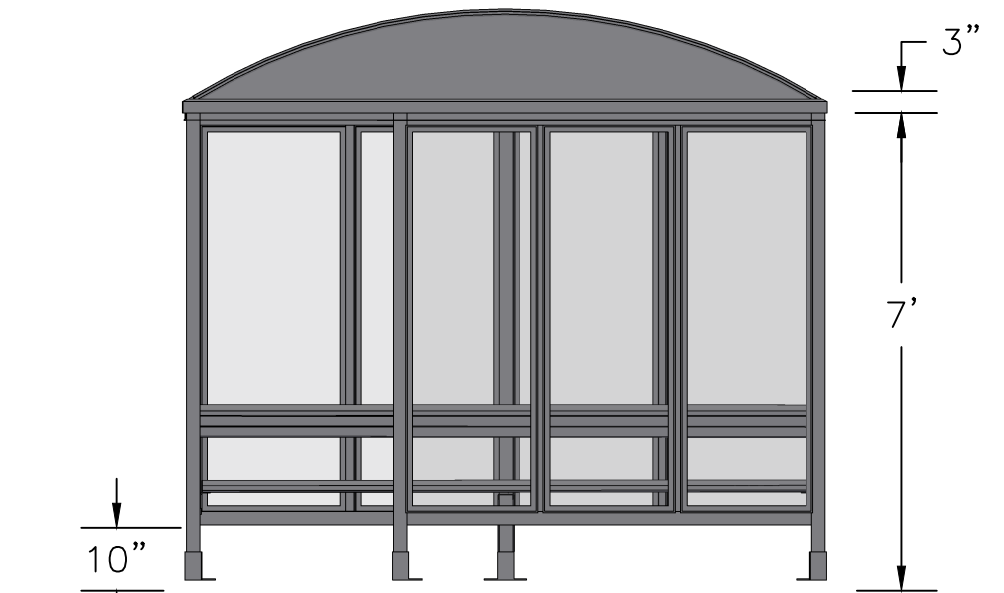


SCALE=1:22

MODEL #S4-4B
ACCOMMODATES 10-12

Handi-Hut®

3 Grunwald St. Clifton, NJ
07013
Tel: 973-614-1800
www.handi-hut.com



SCALE=1:35

MODEL #S4-4B
ACCOMMODATES 10-12

9'-10 1/2" X 9'-10 1/2" BARREL ROOF
PASSENGER/SMOKING SHELTER
LEFT FRONT OPENING

ALUMINIUM: 6063-T52
AVAILABLE FINISHES: DARK BRONZE ANODIZED
CLEAR ANODIZED
CUSTOM COLOR POWDER-COAT
GLAZING: 1/4" CLEAR TEMPERED GLASS
ROOF PANELS: 1/4" BRONZE OR CLEAR TWIN WALL
POLYCARBONATE
BENCH/BACKREST: EXTRUDED ALUMINIUM

Handi-Hut®

3 Grunwald St. Clifton, NJ
07013
Tel: 973-614-1800
www.handi-hut.com

RECOMMENDED PAD SIZE-12'-0" X 12'-0" X 6" THICK MINIMUM