
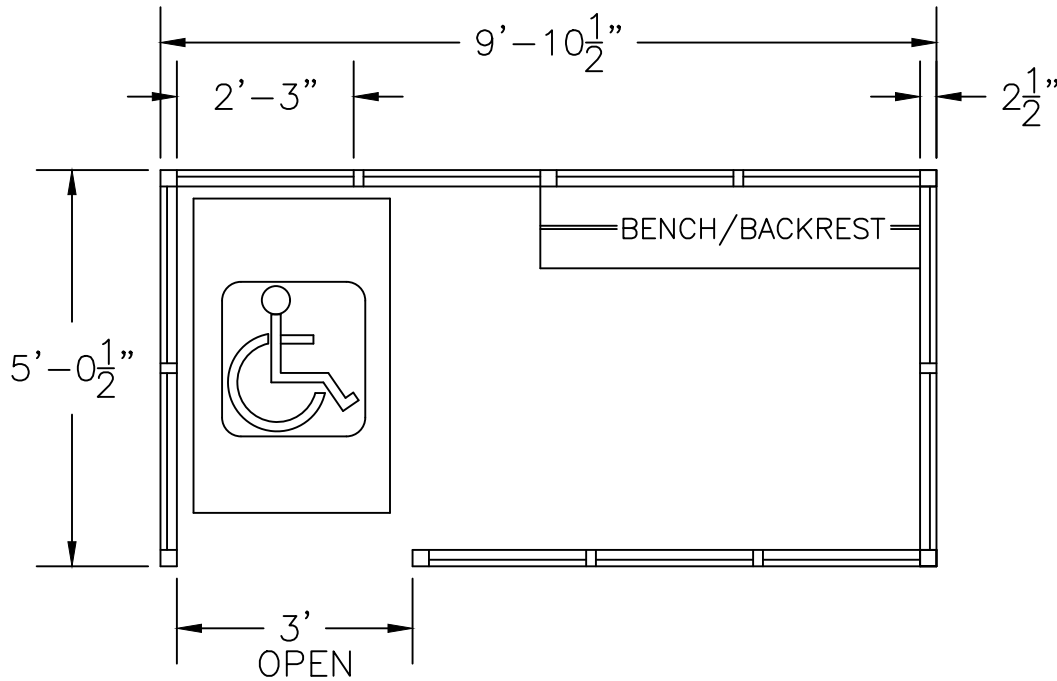
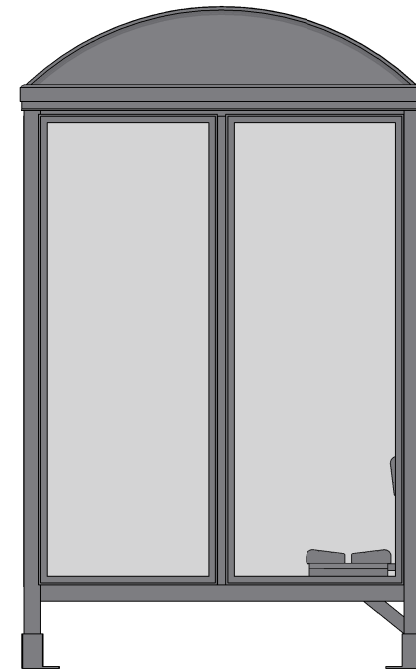
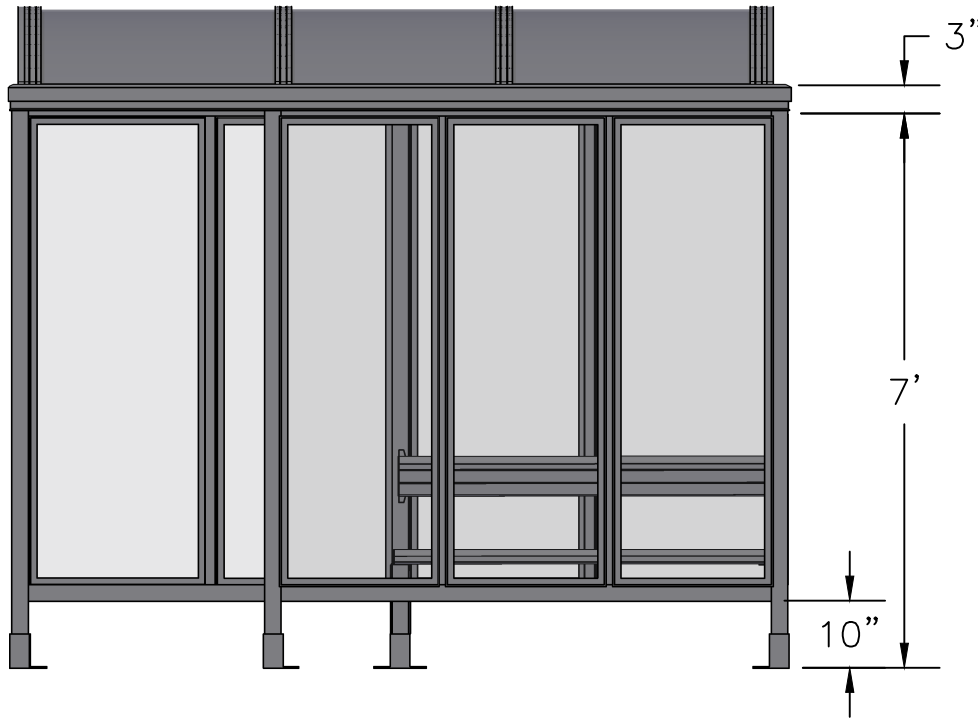


SCALE=1:20

<p>MODEL #S4-2B ACCOMMODATES 5-6</p>	
	<p>3 Grunwald St. Clifton, NJ 07013 Tel: 973-614-1800 www.handi-hut.com</p>



RECOMMENDED PAD SIZE-12'-0" X 7'-0" X 6" THICK MINIMUM

SCALE=1:30

MODEL #S4-2B  
ACCOMMODATES 5-6

9'-10 1/2" X 5'-0 1/2" BARREL ROOF  
PASSENGER/SMOKING SHELTER  
LEFT FRONT OPENING

ALUMINIUM: 6063-T52  
AVAILABLE FINISHES: DARK BRONZE ANODIZED  
CLEAR ANODIZED  
CUSTOM COLOR POWDER-COAT  
GLAZING: 1/4" CLEAR TEMPERED GLASS  
ROOF PANELS: 1/4" BRONZE OR CLEAR TWIN WALL  
POLYCARBONATE  
BENCH/BACKREST: EXTRUDED ALUMINIUM

	3 Grunwald St. Clifton, NJ 07013
	Tel: 973-614-1800 www.handi-hut.com