
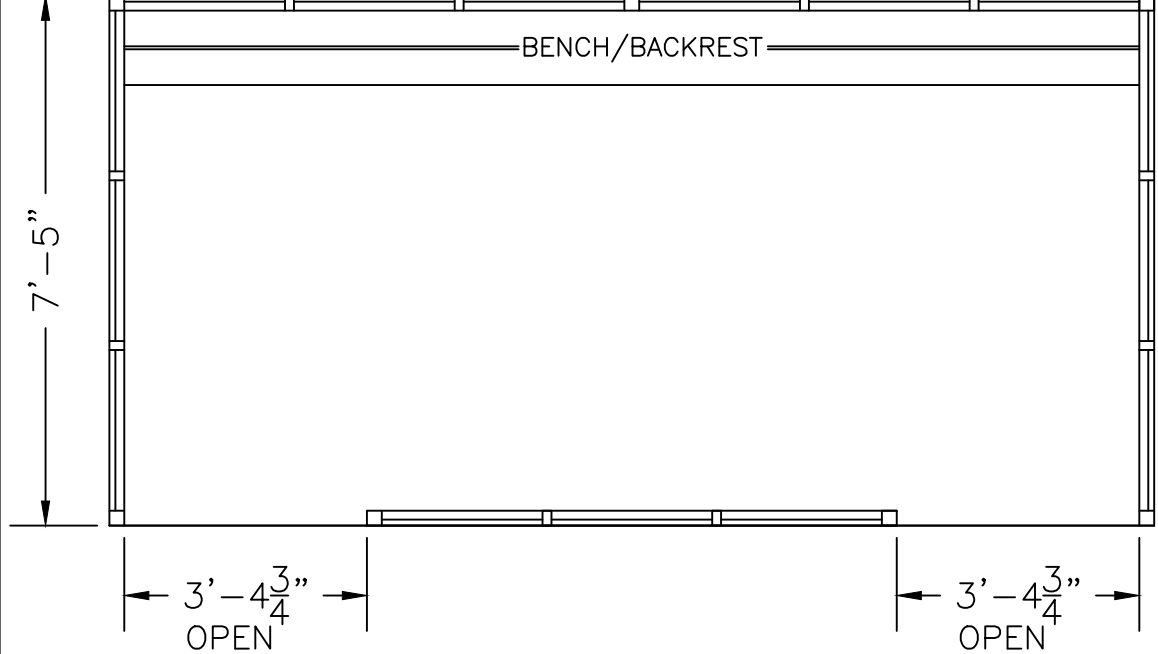
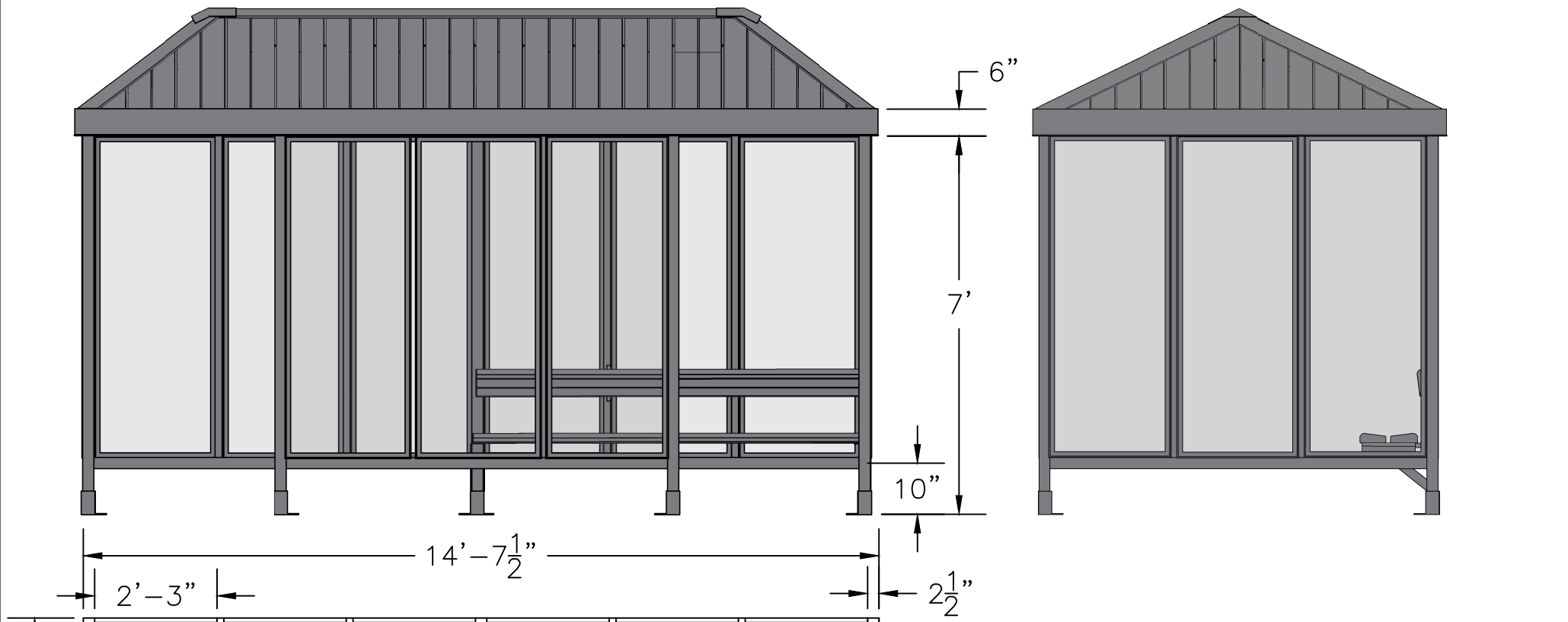


SCALE=1:25

<p>MODEL #6-3WSR ACCOMMODATES 12-14</p>	
	<p>3 Grunwald St. Clifton, NJ 07013 Tel: 973-614-1800 www.handi-hut.com</p>



RECOMMENDED PAD SIZE-16'-6" X 9'-6" X 6" THICK MINIMUM

SCALE=1:33

**MODEL #6-3WSR**  
**ACCOMMODATES 12-14**


---

14'-7 1/2" X 7'-5" SS. HIP ROOF  
 PASSENGER/SMOKING SHELTER  
 LEFT & RIGHT FRONT OPENINGS

---

ALUMINIUM: 6063-T52  
 AVAILABLE FINISHES: DARK BRONZE ANODIZED  
 CLEAR ANODIZED  
 CUSTOM COLOR POWDER-COAT  
 GLAZING: 1/4" CLEAR TEMPERED GLASS  
 ROOF PANELS: 11" ATAS DUTCH SEAM DECKING  
 BLACK KYNAR FINISH  
 BENCH/BACKREST: EXTRUDED ALUMINIUM

---

	3 Grunwald St. Clifton, NJ 07013 Tel: 973-614-1800 <a href="http://www.handi-hut.com">www.handi-hut.com</a>
---	--