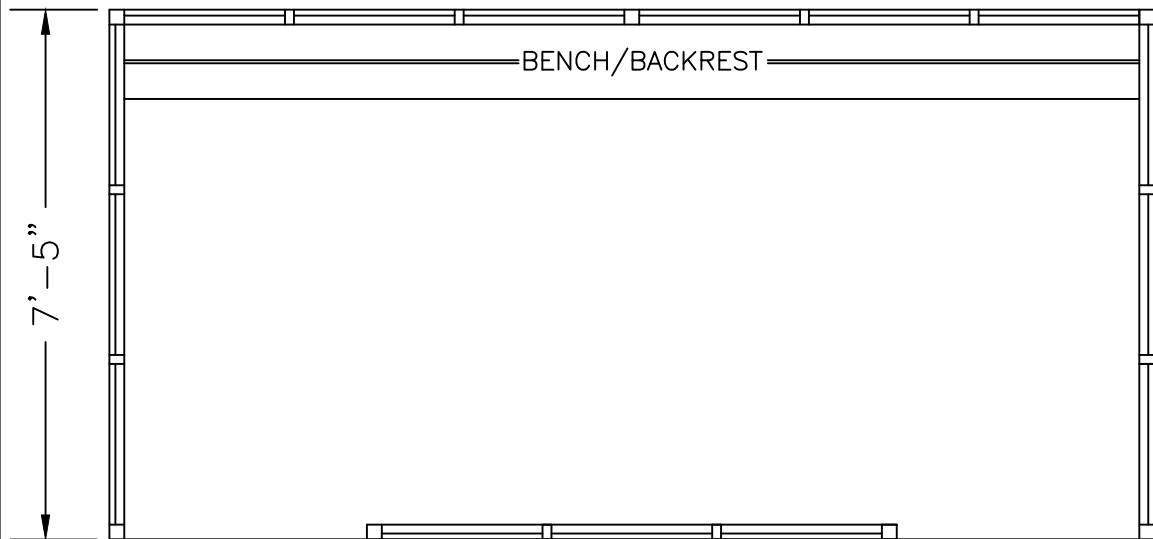
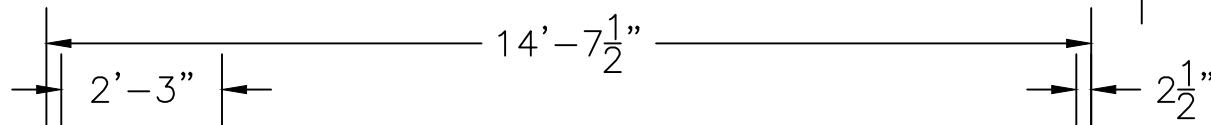
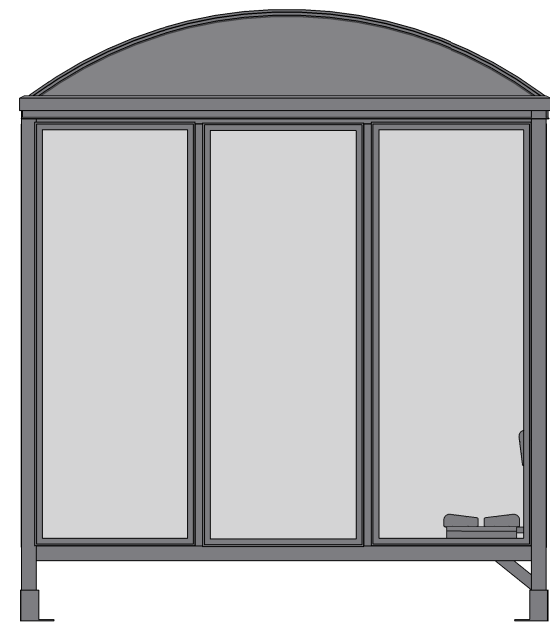


SCALE=1:25

MODEL #6-3WSB
 ACCOMMODATES 12-14

Handi-Hut[®]

3 Grunwald St. Clifton, NJ
 07013
 Tel: 973-614-1800
 www.handi-hut.com



7'-5"

BENCH/BACKREST

3'-4 3/4"
OPEN

3'-4 3/4"
OPEN

RECOMMENDED PAD SIZE-16'-6" X 9'-6" X 6" THICK MINIMUM

SCALE=1:33

MODEL #6-3WSB
ACCOMMODATES 12-14

14'-7 1/2" X 7'-5" BARREL ROOF
PASSENGER/SMOKING SHELTER
LEFT & RIGHT FRONT OPENINGS

ALUMINIUM: 6063-T52
AVAILABLE FINISHES: DARK BRONZE ANODIZED
CLEAR ANODIZED
CUSTOM COLOR POWDER-COAT
GLAZING: 1/4" CLEAR TEMPERED GLASS
ROOF PANELS: 1/4" BRONZE OR CLEAR TWIN WALL
POLYCARBONATE
BENCH/BACKREST: EXTRUDED ALUMINIUM



3 Grunwald St. Clifton, NJ
07013
Tel: 973-614-1800
www.handi-hut.com