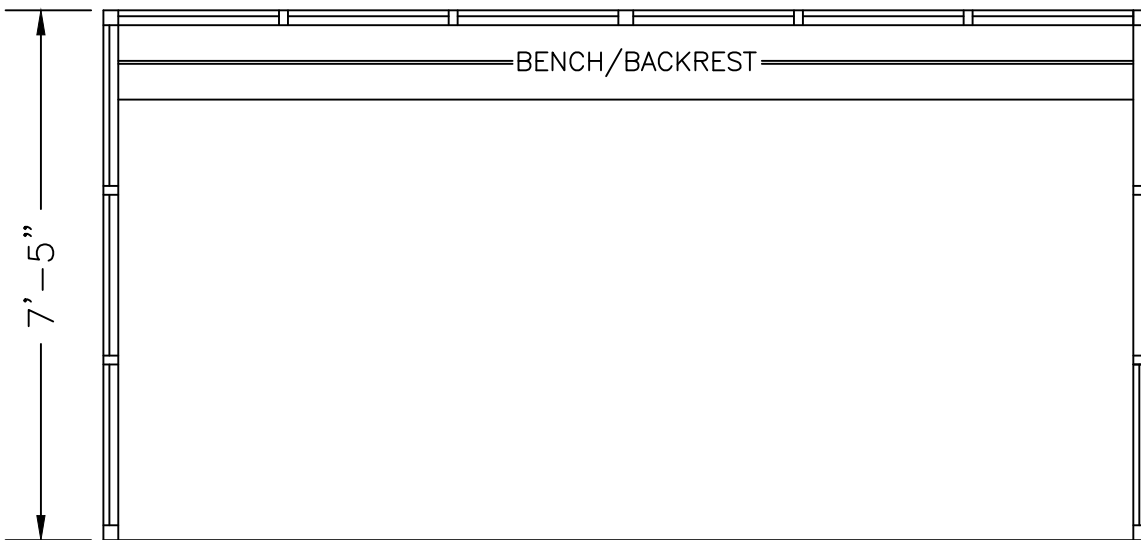
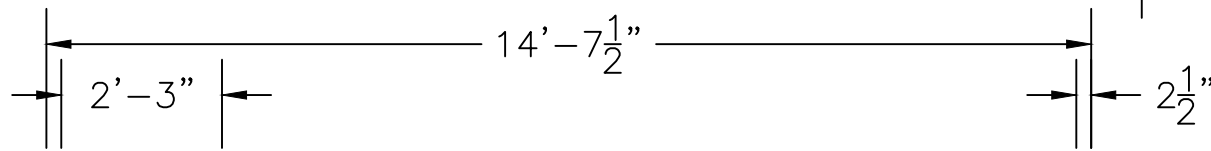
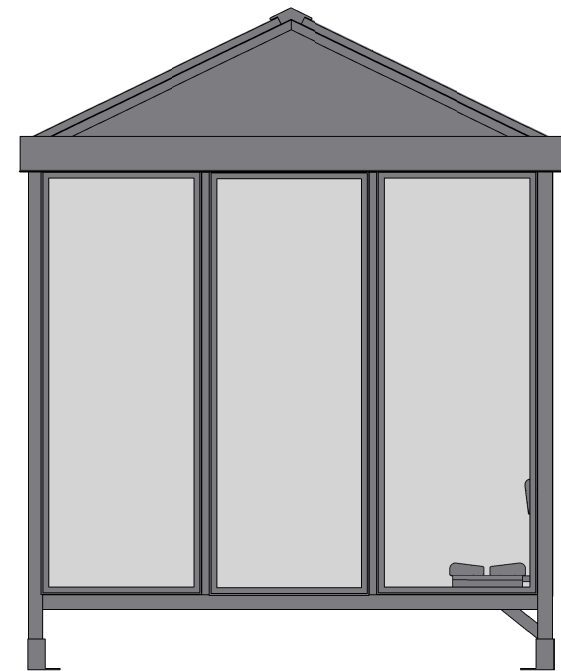
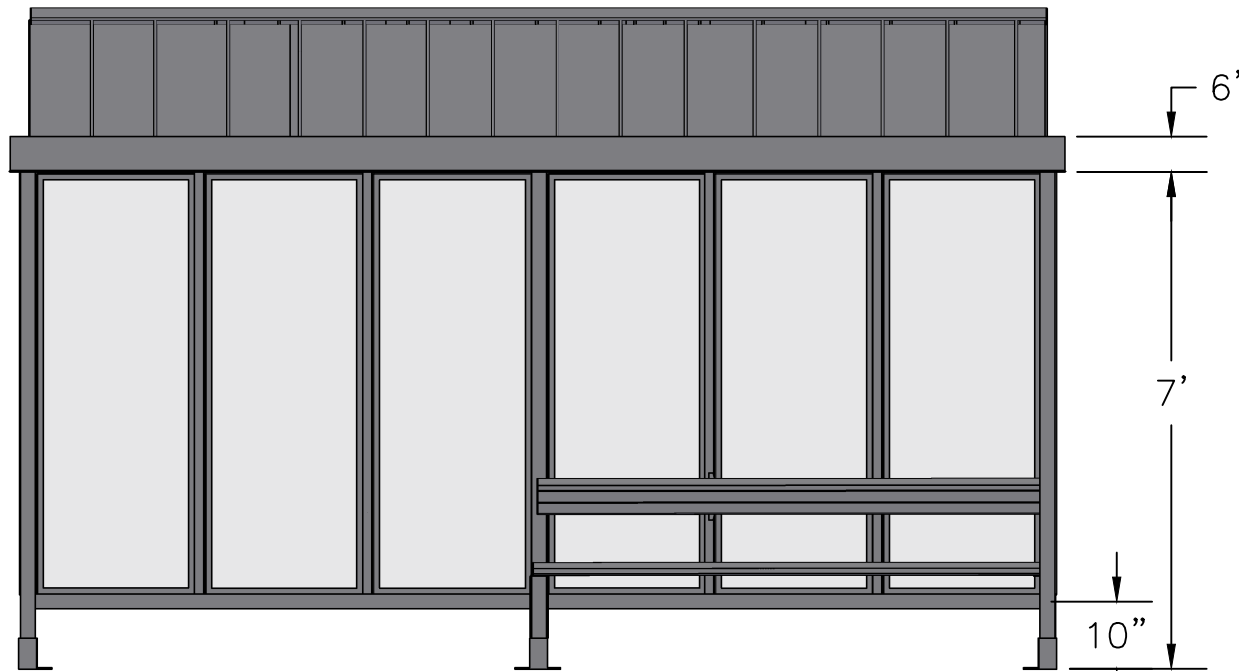


SCALE=1:25

MODEL #6-3RG
ACCOMMODATES 12-14


Handi-Hut[®]

3 Grunwald St. Clifton, NJ
07013
Tel: 973-614-1800
www.handi-hut.com



RECOMMENDED PAD SIZE-16'-6" X 9'-6" X 6" THICK MINIMUM

SCALE=1:33

| | |
|--|---|
| <p>MODEL #6-3RG ACCOMMODATES 12-14</p> | |
| <p>14'-7 1/2" X 7'-5" SS. GABLE ROOF PASSENGER/SMOKING SHELTER OPEN FRONT</p> | |
| <p>ALUMINIUM: 6063-T52 AVAILABLE FINISHES: DARK BRONZE ANODIZED CLEAR ANODIZED CUSTOM COLOR POWDER-COAT</p> | |
| <p>GLAZING: 1/4" CLEAR TEMPERED GLASS ROOF PANELS: 11" ATAS DUTCH SEAM DECKING BLACK KYNAR FINISH BENCH/BACKREST: EXTRUDED ALUMINIUM</p> | |
|  | <p>3 Grunwald St. Clifton, NJ 07013 Tel: 973-614-1800 www.handi-hut.com</p> |