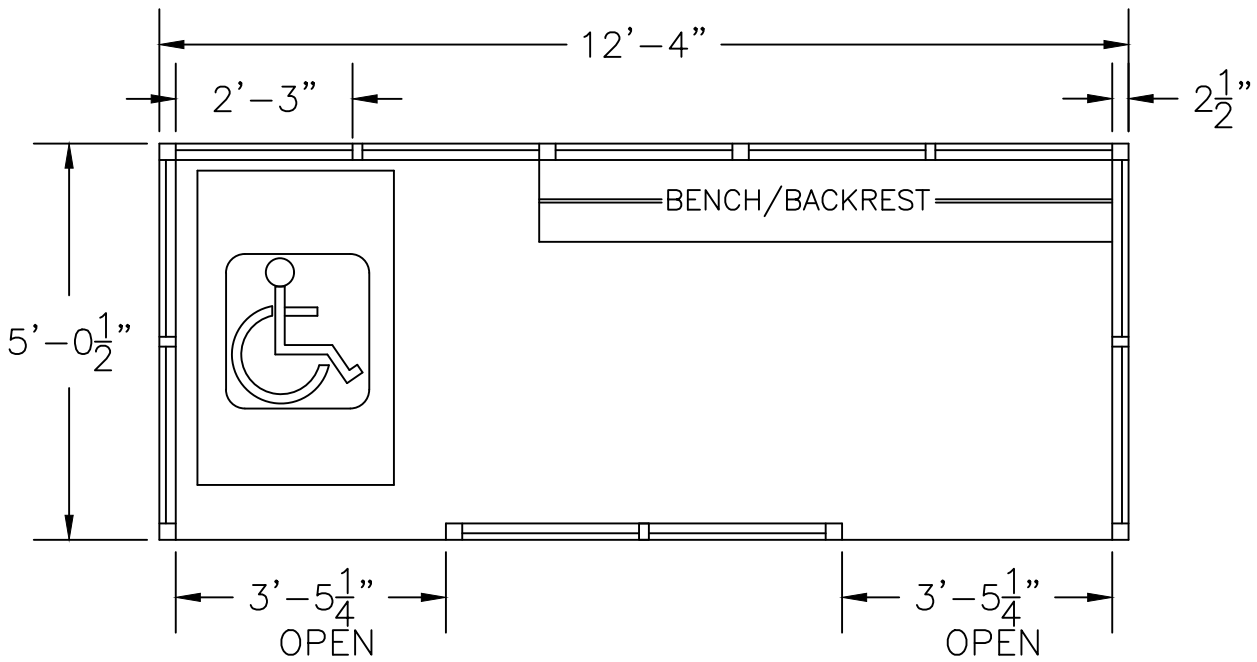
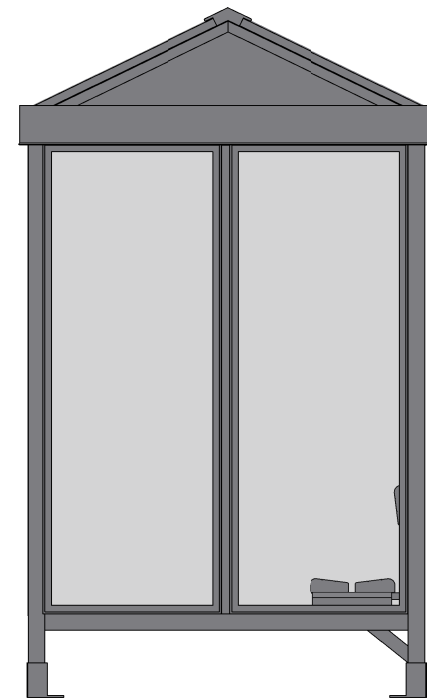
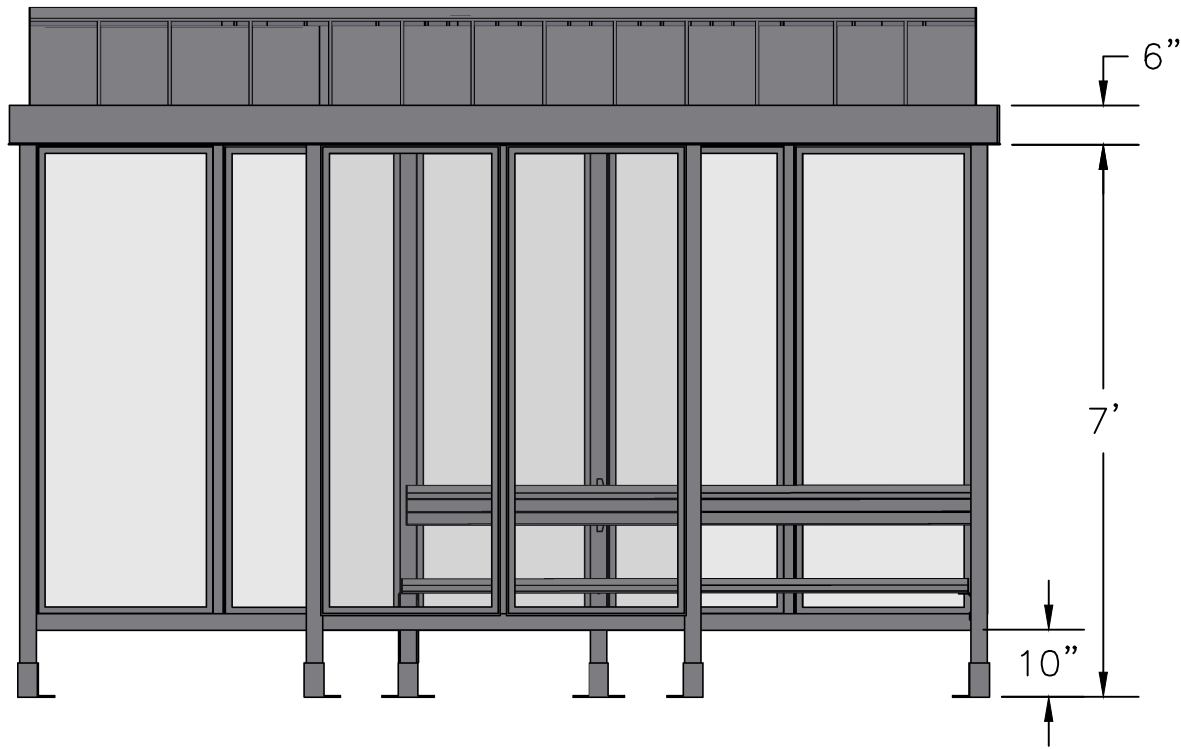


SCALE=1:20

MODEL #5-2WSRG  
ACCOMMODATES 6-7

**Handi-Hut**<sup>®</sup>

3 Grunwald St. Clifton, NJ  
07013  
Tel: 973-614-1800  
www.handi-hut.com



RECOMMENDED PAD SIZE-14'-0" X 7'-0" X 6" THICK MINIMUM

SCALE=1:30

<p>MODEL #5-2WSRG ACCOMMODATES 6-7</p>	
<p>12'-4" X 5'-0 1/2" STANDING SEAM GABLE ROOF PASSENGER/SMOKING SHELTER LEFT &amp; RIGHT FRONT OPENINGS</p>	
<p>ALUMINIUM: 6063-T52 AVAILABLE FINISHES: DARK BRONZE ANODIZED CLEAR ANODIZED CUSTOM COLOR POWDER-COAT</p>	
<p>GLAZING: 1/4" CLEAR TEMPERED GLASS ROOF PANELS: 11" ATAS DUTCH SEAM DECKING BLACK KYNAR FINISH BENCH/BACKREST: EXTRUDED ALUMINIUM</p>	
	<p>3 Grunwald St. Clifton, NJ 07013 Tel: 973-614-1800 www.handi-hut.com</p>