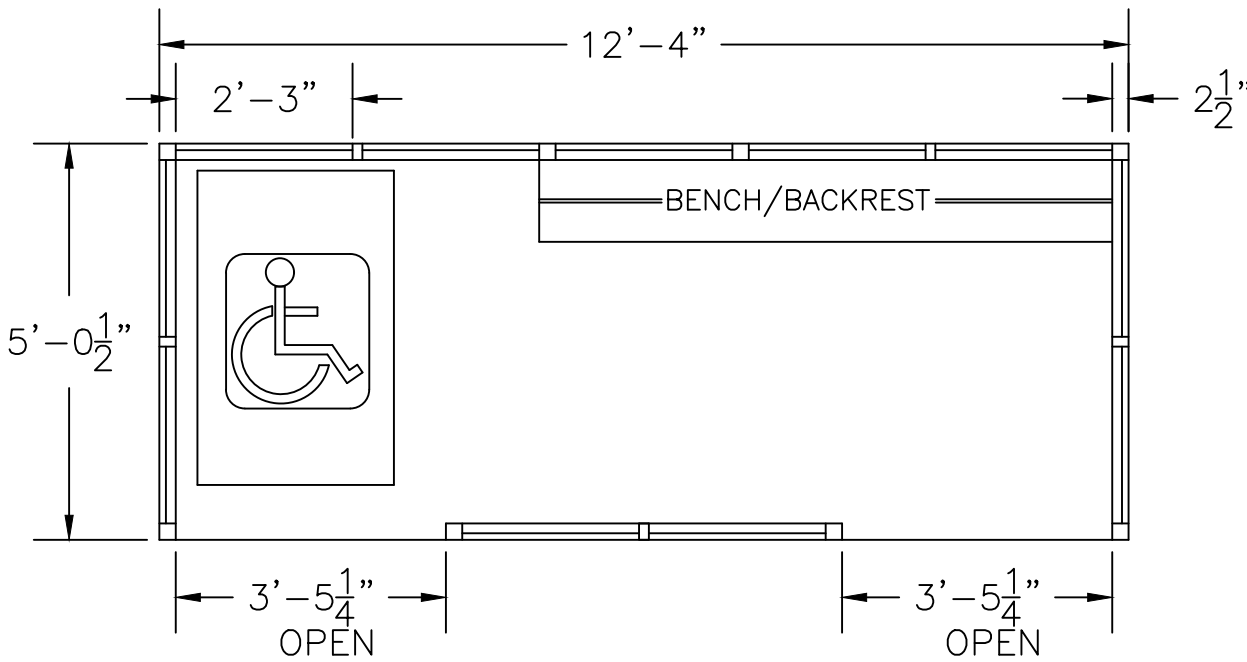
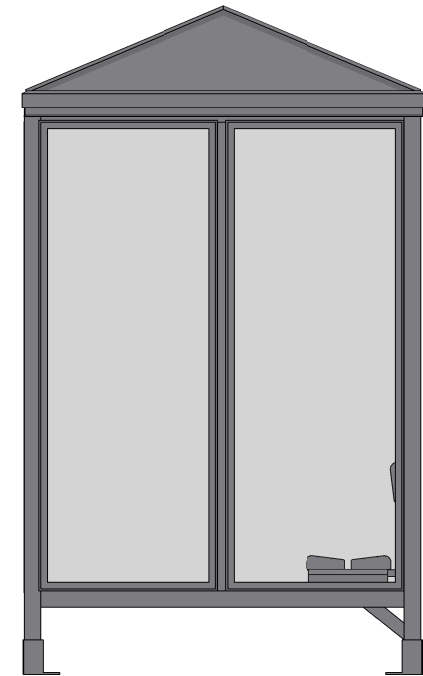
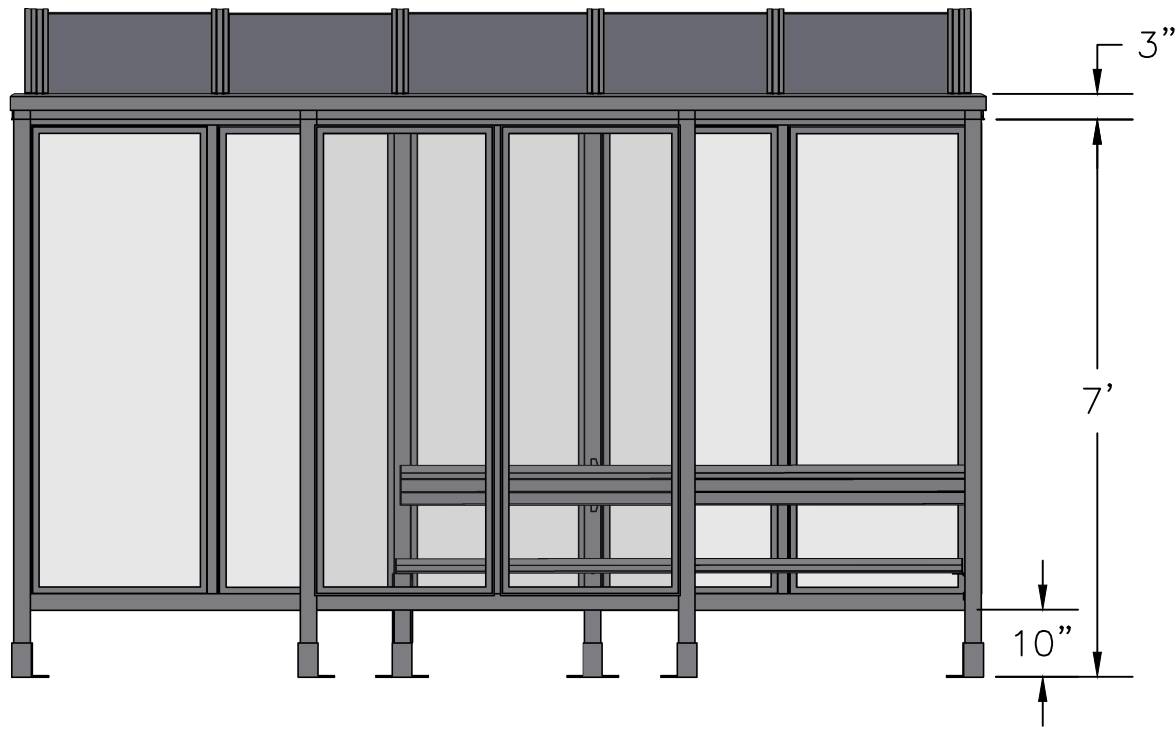


SCALE=1:20

MODEL #5-2WSPG  
ACCOMMODATES 6-7



3 Grunwald St. Clifton, NJ  
07013  
Tel: 973-614-1800  
www.handi-hut.com



SCALE=1:30

MODEL #5-2WSPG  
ACCOMMODATES 6-7

12'-4" X 5'-0 1/2" POLY-GABLE ROOF  
PASSENGER/SMOKING SHELTER  
LEFT & RIGHT FRONT OPENINGS

ALUMINIUM: 6063-T52  
AVAILABLE FINISHES: DARK BRONZE ANODIZED  
CLEAR ANODIZED  
CUSTOM COLOR POWDER-COAT  
GLAZING: 1/4" CLEAR TEMPERED GLASS  
ROOF PANELS: 1/4" BRONZE OR CLEAR TWIN WALL  
POLYCARBONATE  
BENCH/BACKREST: EXTRUDED ALUMINIUM

**Handi-Hut®** 3 Grunwald St. Clifton, NJ  
07013  
Tel: 973-614-1800  
www.handi-hut.com

RECOMMENDED PAD SIZE-14'-0" X 7'-0" X 6" THICK MINIMUM