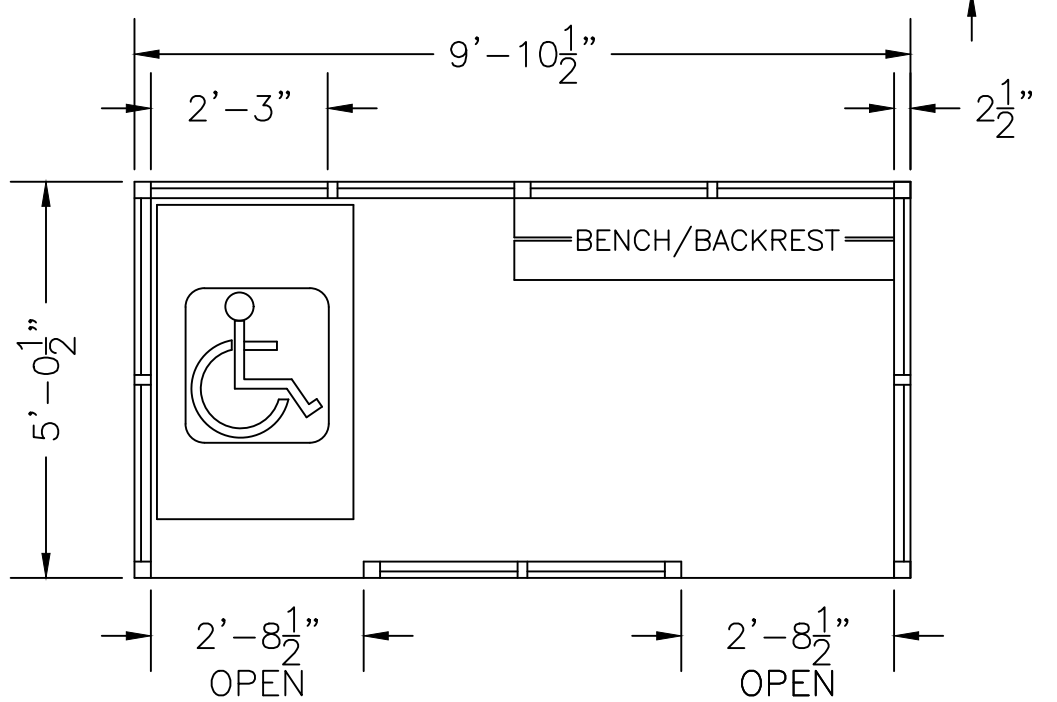
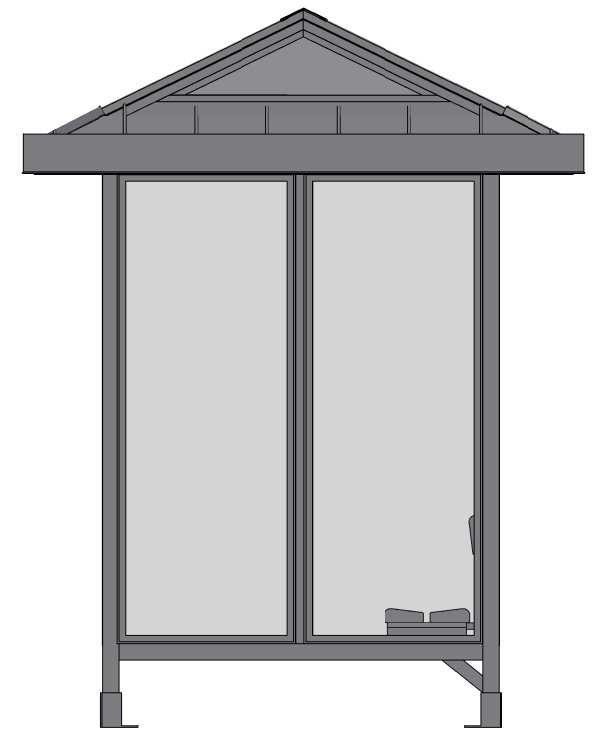
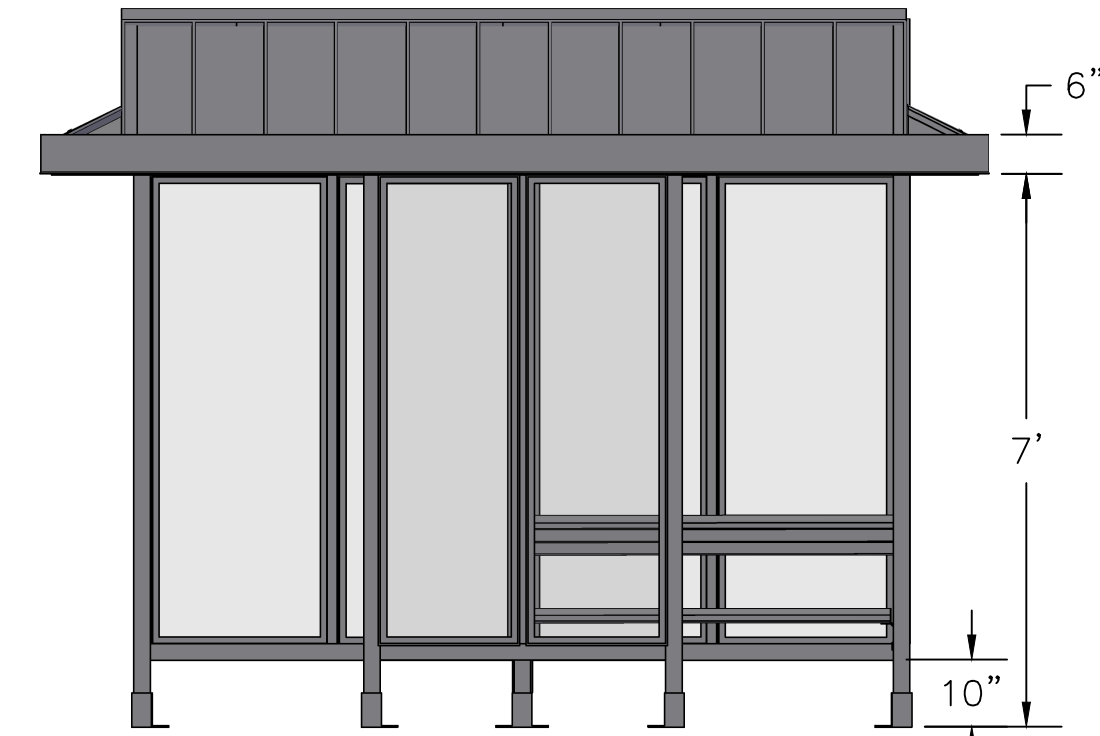


SCALE=1:20

MODEL #4-2WSH  
ACCOMMODATES 5-6

**Handi-Hut®**

3 Grunwald St. Clifton, NJ  
07013  
Tel: 973-614-1800  
www.handi-hut.com



RECOMMENDED PAD SIZE-12'-0" X 7'-0" X 6" THICK MINIMUM

SCALE=1:30

<p>MODEL #4-2WSH ACCOMMODATES 5-6</p>	
<p>9'-10 1/2" X 5'-0 1/2" HISTORICAL ROOF PASSENGER/SMOKING SHELTER LEFT &amp; RIGHT FRONT OPENINGS</p>	
<p>ALUMINIUM: 6063-T52 AVAILABLE FINISHES: DARK BRONZE ANODIZED CLEAR ANODIZED CUSTOM COLOR POWDER-COAT</p>	
<p>GLAZING: 1/4" CLEAR TEMPERED GLASS ROOF PANELS: 11" ATAS DUTCH SEAM DECKING BLACK KYNAR FINISH BENCH/BACKREST: EXTRUDED ALUMINIUM</p>	
	<p>3 Grunwald St. Clifton, NJ 07013 Tel: 973-614-1800 www.handi-hut.com</p>