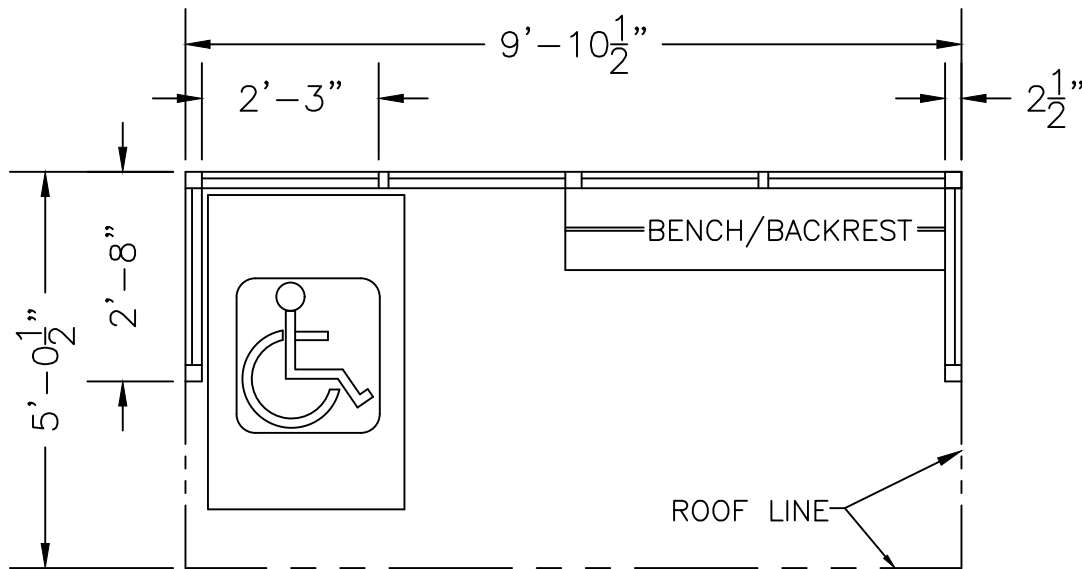
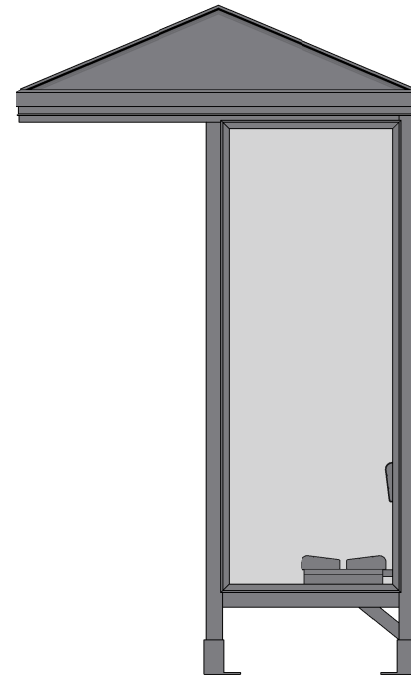
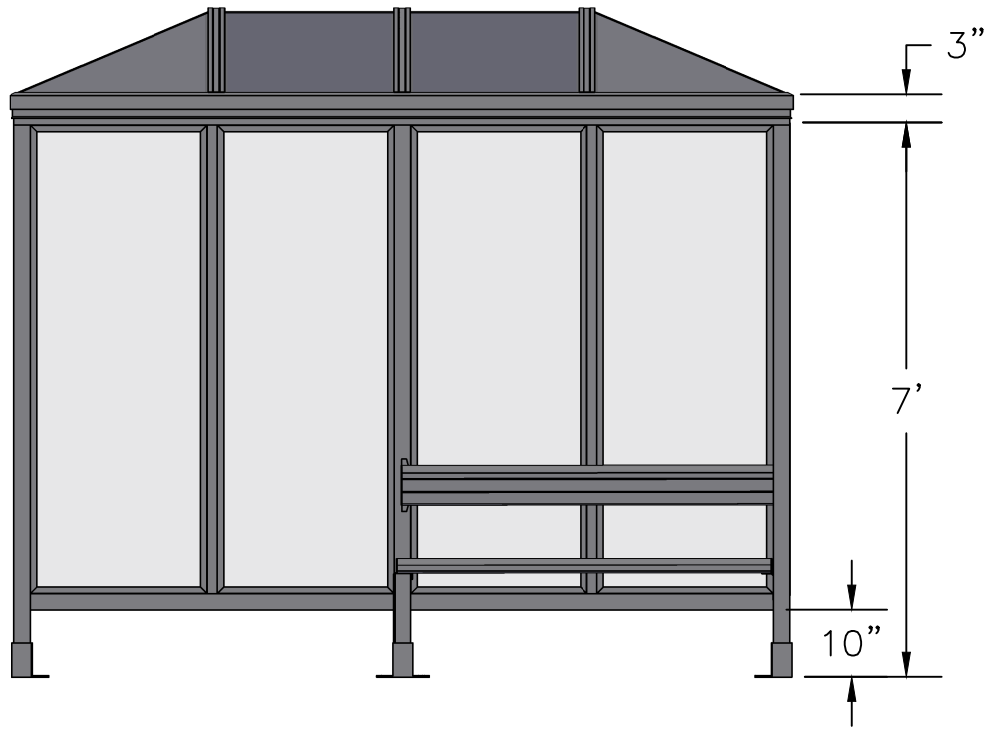


SCALE=1:20

MODEL #4-1PG  
ACCOMMODATES 5-6

**Handi-Hut**<sup>®</sup>

3 Grunwald St. Clifton, NJ  
07013  
Tel: 973-614-1800  
[www.handi-hut.com](http://www.handi-hut.com)



RECOMMENDED PAD SIZE-12'-0" X 7'-0" X 6" THICK MINIMUM

SCALE=1:30

MODEL #4-1PG  
ACCOMMODATES 5-6

9'-10 1/2" X 2'-8" CANTILEVER POLY-HIP ROOF  
PASSENGER/SMOKING SHELTER  
OPEN FRONT

ALUMINIUM: 6063-T52  
AVAILABLE FINISHES: DARK BRONZE ANODIZED  
CLEAR ANODIZED  
CUSTOM COLOR POWDER-COAT  
GLAZING: 1/4" CLEAR TEMPERED GLASS  
ROOF PANELS: 1/4" BRONZE OR CLEAR TWIN WALL  
POLYCARBONATE  
BENCH/BACKREST: EXTRUDED ALUMINIUM

**Handi-Hut®**

3 Grunwald St. Clifton, NJ  
07013  
Tel: 973-614-1800  
www.handi-hut.com