

Handi-Hut®

Shelters and Enclosures

We've Merged!
 **velodomeshelters**
BIKE PARKING SOLUTIONS
 is now Handi-Hut

HANDI-HUT INC.
 3 GRUNWALD ST.
 CLIFTON, NJ 07013
 PHONE: (973) 614-8100
 staff@handi-hut.com
 www.handi-hut.com

VELOMAX MODEL:

- 12 FT (BIKE CAPACITY: 9)
- 9 FT (BIKE CAPACITY: 6)

FINISH:

- CLEAR ANODIZED
- DARK BRONZE

ROOF POLYCARBONATE COLOR:

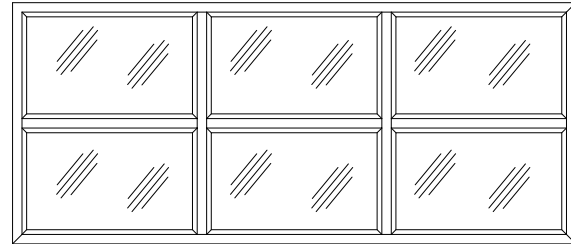
- WHITE
- TINTED BRONZE

OPTIONAL: *

- SOLAR LIGHTING

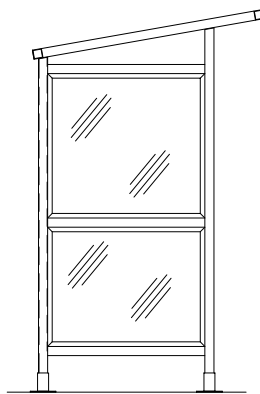
PROFESSIONAL ENGINEERING REPORT: *

- ACCEPTED
- DECLINED

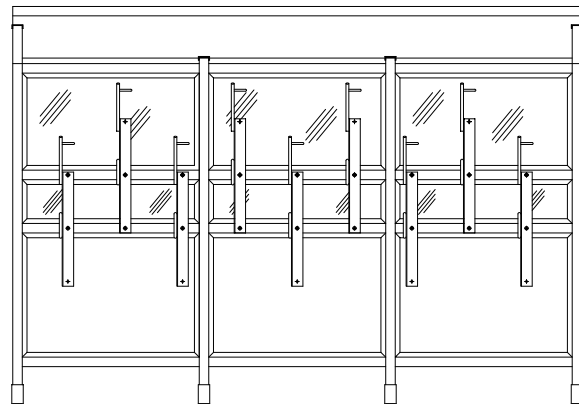


TOP VIEW

* = ADDITIONAL CHARGES



SIDE ELEVATION



FRONT ELEVATION

SPECIFICATIONS

FRAME: 6063 – T52 ALLOY ALUMINUM
ROOF: SLANT, TWIN WALL, 6MM POLYCARBONATE
SIDES: TWIN WALL, 6MM POLYCARBONATE
BIKE CAPACITY: 9 BIKES / 6 BIKES

NOTES:

1. SEE MANUFACTURER FOR COLOR AND SECURITY OPTIONS.
2. INSTALLATION TO BE COMPLETED IN ACCORDANCE WITH MANUFACTURER'S SPECIFICATIONS.
3. DO NOT SCALE DRAWING.
4. THIS DRAWING IS INTENDED FOR USE BY ARCHITECTS, ENGINEERS, CONTRACTORS, CONSULTANTS AND DESIGN PROFESSIONALS FOR PLANNING PURPOSES ONLY. THIS DRAWING MAY NOT BE USED FOR CONSTRUCTION.
5. ALL INFORMATION CONTAINED HEREIN WAS CURRENT AT THE TIME OF DEVELOPMENT BUT MUST BE REVIEWED AND APPROVED BY THE PRODUCT MANUFACTURER TO BE CONSIDERED ACCURATE.
6. CONTRACTOR'S NOTE: FOR PRODUCT AND COMPANY INFORMATION VISIT www.CADdetails.com/info AND ENTER REFERENCE NUMBER 5001-030.

