

Handi-Hut®

Shelters and Enclosures

We've Merged!
 **velodomes**shelters
BIKE PARKING SOLUTIONS
 is now Handi-Hut

HANDI-HUT INC.
 3 GRUNWALD ST.
 CLIFTON, NJ 07013
 PHONE: (973) 614-8100
 staff@handi-hut.com
 www.handi-hut.com

PEASPOD MINI MODEL:

- ☐ PEASPOD MINI 10: 14' - 7 1/2" L X 7' - 5" W X 8' - 0" H
- ☐ PEASPOD MINI 15: 21' - 10" L X 7' - 5" W X 8' - 0" H
- ☐ PEASPOD MINI 20: 29' - 1/2" L X 7' - 5" W X 8' - 0" H
- ☐ PEASPOD MINI 25: 36' - 3" L X 7' - 5" W X 8' - 0" H
- ☐ PEASPOD MINI 30: 43' - 5" L X 7' - 5" W X 8' - 0" H
- ☐ PEASPOD MINI 35: 50' - 8" L X 7' - 5" W X 8' - 0" H
- ☐ PEASPOD MINI 40: 57' - 10 1/2" L X 7' - 5" W X 8' - 0" H

FINISH:

- ☐ ANODIZED DARK BRONZE
- ☐ ANODIZED CLEAR (SILVER)

ROOF STYLE:

- ☐ BARREL
- ☐ HIP
- ☐ FLAT

ROOF POLYCARBONATE COLOR:

- ☐ WHITE
 - ☐ BRONZE TINT
 - ☐ STANDING SEAM (HIP ONLY) *
- COLOR: _____

SIDE PANELS:

- ☐ 1/4" TEMPERED GLASS
- ☐ STAINLESS STEEL WIRE MESH *

DOOR ACCESS CONTROL:

- ☐ KEY LOCK
- ☐ CUSTOMER PROVIDED LOCK *

SPECIFICATIONS:

FRAME: 6063-T52 ALLOY, ALUMINUM; ANODIZED FINISH, INTERNAL RAIN GUTTERS

ROOF: TWIN WALL, 6MM POLYCARBONATE, UV PROTECTION

DOOR: 42" TEMPERED GLASS ALUMINUM FRAME

NOTES:

1. SEE MANUFACTURER FOR COLOR AND SECURITY OPTIONS.
2. INSTALLATION TO BE COMPLETED IN ACCORDANCE WITH MANUFACTURER'S SPECIFICATIONS.
3. DO NOT SCALE DRAWING.
4. THIS DRAWING IS INTENDED FOR USE BY ARCHITECTS, ENGINEERS, CONTRACTORS, CONSULTANTS AND DESIGN PROFESSIONALS FOR PLANNING PURPOSES ONLY. THIS DRAWING MAY NOT BE USED FOR CONSTRUCTION.
5. ALL INFORMATION CONTAINED HEREIN WAS CURRENT AT THE TIME OF DEVELOPMENT BUT MUST BE REVIEWED AND APPROVED BY THE PRODUCT MANUFACTURER TO BE CONSIDERED ACCURATE.
6. CONTRACTOR'S NOTE: FOR PRODUCT AND COMPANY INFORMATION VISIT www.CADdetails.com/info AND ENTER REFERENCE NUMBER 5001-027.

DOOR LOCATION:

- ☐ LEFT CORNER
- ☐ RIGHT CORNER

DOOR SWING:

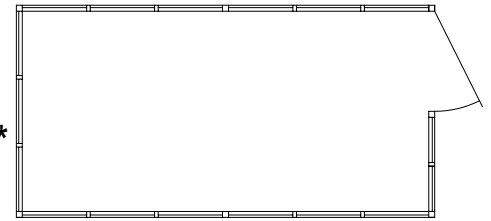
- ☐ LEFT-HAND OUTSWING
- ☐ RIGHT-HAND OUTSWING

OPTIONAL: *

- ☐ BIKE PARKING VINYL SIGN
- ☐ CUSTOM VINYL SIGN
- ☐ SOLAR LIGHTING

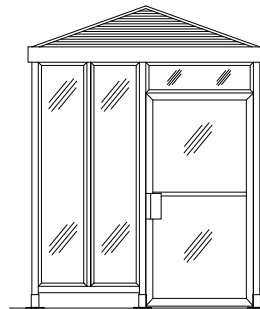
PROFESSIONAL ENGINEERING REPORT: *

- ☐ ACCEPTED
- ☐ DECLINED

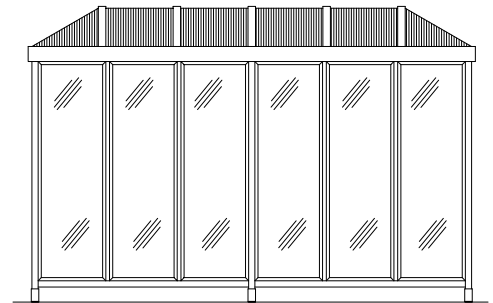


TOP VIEW

* = ADDITIONAL CHARGES



FRONT ELEVATION



SIDE ELEVATION



RIGHT-HAND OUTSWING



LEFT-HAND OUTSWING

