

Handi-Hut®

Shelters and Enclosures

We've Merged!
 **velodome shelters**
BIKE PARKING SOLUTIONS
 is now Handi-Hut

HANDI-HUT INC.
 3 GRUNWALD ST.
 CLIFTON, NJ 07013
 PHONE: (973) 614-8100
 staff@handi-hut.com
 www.handi-hut.com

BIKE GARAGE

FINISH:

- ☐ ANODIZED CLEAR (SILVER)
☐ ANODIZED DARK BRONZE

ROOF POLYCARBONATE COLOR:

- ☐ BRONZE TINT
☐ WHITE

WALL POLYCARBONATE COLOR:

- ☐ BRONZE TINT
☐ WHITE

GARAGE DOOR COLOR:

- ☐ GALVALUME (SILVER GRAY)
☐ BRONZE

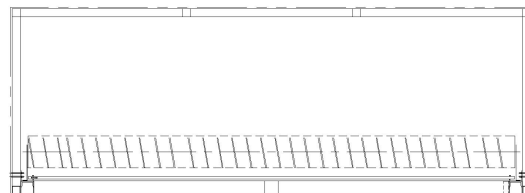
OPTIONAL: *

- ☐ SOLAR LIGHTING

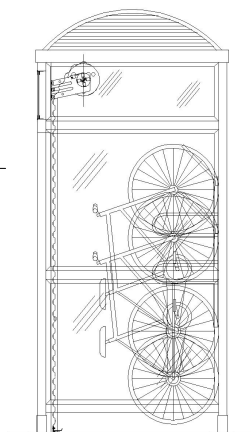
PROFESSIONAL ENGINEERING REPORT:

- ☐ ACCEPTED
☐ DECLINED

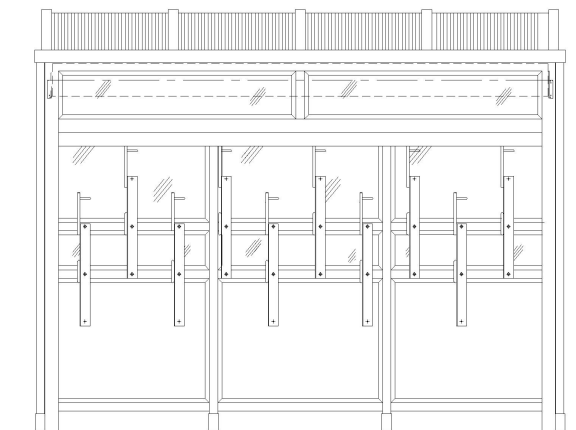
* = ADDITIONAL CHARGES



PLAN VIEW



SIDE ELEVATION



FRONT ELEVATION

SPECIFICATIONS

MATERIAL: 6063-T52 ALLOY ALUMINUM

ROOF: TWIN WALL, 6MM POLYCARBONATE; UV PROTECTION

WALL PANELS: 6MM POLYCARBONATE

BACK BOTTOM PANELS: OMEGA-PLY; BLACK

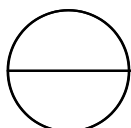
DIMENSIONS: 13'-1" L X 4'-8" W X 10' H

DOOR: CORRUGATED STEEL

CAPACITY: 10

NOTES:

1. SEE MANUFACTURER FOR COLOR OPTIONS. (CUSTOM COLORS AVAILABLE)
2. INSTALLATION TO BE COMPLETED IN ACCORDANCE WITH MANUFACTURER'S SPECIFICATIONS.
3. DO NOT SCALE DRAWING.
4. THIS DRAWING IS INTENDED FOR USE BY ARCHITECTS, ENGINEERS, CONTRACTORS, CONSULTANTS AND DESIGN PROFESSIONALS FOR PLANNING PURPOSES ONLY. THIS DRAWING MAY NOT BE USED FOR CONSTRUCTION.
5. ALL INFORMATION CONTAINED HEREIN WAS CURRENT AT THE TIME OF DEVELOPMENT BUT MUST BE REVIEWED AND APPROVED BY THE PRODUCT MANUFACTURER TO BE CONSIDERED ACCURATE.
6. CONTRACTOR'S NOTE: FOR PRODUCT AND COMPANY INFORMATION VISIT www.CADdetails.com/info AND ENTER REFERENCE NUMBER 5001-023.



BIKE SHELTER

BIKEGARAGE™