

TRANSIT MODEL:

- ☐ 7' CLEAR (HORIZONTAL RACKS)
- ☐ 8' CLEAR (VERTICAL RACKS)

FINISH:

- ☐ ANODIZED DARK BRONZE
- ☐ ANODIZED CLEAR (SILVER)

ROOF STYLE:

- ☐ BARREL
- ☐ HIP
- ☐ GABLE
- ☐ FLAT
- ☐ STANDING SEAM - HIP OR GABLE *

ROOF POLYCARBONATE COLOR:

- ☐ BRONZE TINT
- ☐ WHITE

OPTIONAL : *

- ☐ SOLAR LIGHTING
- ☐ BIKE PARKING VINYL SIGN
- ☐ CUSTOM VINYL SIGN

PROFESSIONAL ENGINEERING CHARGES: *

- ☐ ACCEPTED
- ☐ DECLINED

* = ADDITIONAL CHARGES

SPECIFICATIONS:

FRAME: 6063-T52 ALLOY, ALUMINUM; ANODIZED FINISH, INTERNAL RAIN GUTTERS

ROOF: TWIN WALL, 6MM POLYCARBONATE, UV PROTECTION

*BICYCLE RACKS ARE NOT INCLUDED WITH SHELTER

DIMENSIONS:

(HEIGHT WILL DEPEND ON BIKE RACKS REQUIRED)

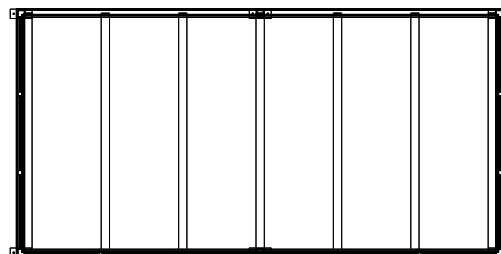
TRANSIT SINGLE: 14'-7 1/2" L X 7'-5" W

TRANSIT DOUBLE: 29'-1 1/2" L X 7'-5" W

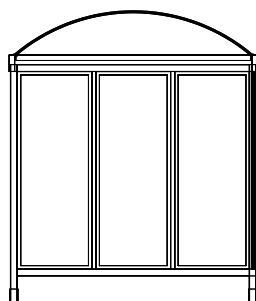
TRANSIT TRIPLE: 43'- 5 1/2" L X 7'-5" W

NOTES:

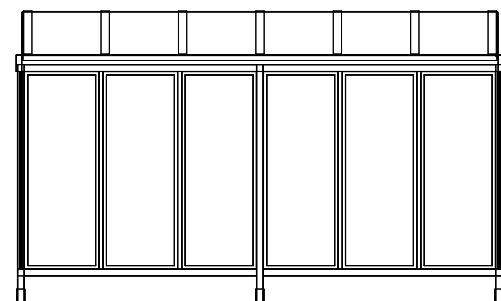
1. SEE MANUFACTURER FOR MORE COLOR OPTIONS.
2. INSTALLATION TO BE COMPLETED IN ACCORDANCE WITH MANUFACTURER'S SPECIFICATIONS.
3. DO NOT SCALE DRAWING.
4. THIS DRAWING IS INTENDED FOR USE BY ARCHITECTS, ENGINEERS, CONTRACTORS, CONSULTANTS AND DESIGN PROFESSIONALS FOR PLANNING PURPOSES ONLY. THIS DRAWING MAY NOT BE USED FOR CONSTRUCTION.
5. ALL INFORMATION CONTAINED HEREIN WAS CURRENT AT THE TIME OF DEVELOPMENT BUT MUST BE REVIEWED AND APPROVED BY THE PRODUCT MANUFACTURER TO BE CONSIDERED ACCURATE.
6. CONTRACTOR'S NOTE: FOR PRODUCT AND COMPANY INFORMATION VISIT www.CADdetails.com/info AND ENTER REFERENCE NUMBER 5001-004.



PLAN VIEW



SIDE ELEVATION



FRONT ELEVATION