

Handi-Hut®

Shelters and Enclosures

We've Merged!
 **velodomeshelters**
BIKE PARKING SOLUTIONS
 is now Handi-Hut

HANDI-HUT INC.
 3 GRUNWALD ST.
 CLIFTON, NJ 07013
 PHONE: (973) 614-8100
 staff@handi-hut.com
 www.handi-hut.com

GUARDIAN MODEL:

- 7' CLEAR, 17' 8" W, (HORIZONTAL RACKS)
- 8' CLEAR, 13' 8" W, (VERTICAL RACKS)
- 8' CLEAR, 21' 8" W, (TWO TIER RACKS)
- OTHER SIZE _____

FINISH:

- ANODIZED DARK BRONZE
- ANODIZED CLEAR (SILVER)

ROOF POLYCARBONATE COLOR:

- BRONZE TINT
- WHITE

SIDE PANELS:

- 1/4" TEMPERED GLASS
- STAINLESS STEEL WIRE MESH *

DOOR ACCESS CONTROL:

- KEY LOCK
- LOCK PROVIDED BY CUSTOMER *

DOOR SWING:

- RIGHT-HAND OUTSWING
- LEFT-HAND OUTSWING

OPTIONAL: *

- SOLAR LIGHTING
- BIKE PARKING VINYL SIGN
- CUSTOM VINYL SIGN

PROFESSIONAL ENGINEERING REPORT: *

- ACCEPTED
- DECLINED

* = ADDITIONAL CHARGES

SPECIFICATIONS:

FRAME: 6063-T52 ALLOY, ALUMINUM; ANODIZED FINISH, INTERNAL RAIN GUTTERS

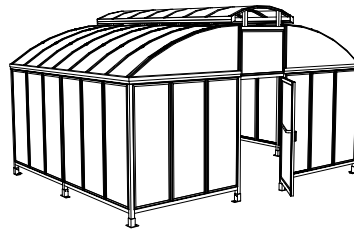
ROOF: TWIN WALL, 6MM POLYCARBONATE, UV PROTECTION

DOOR: 42" TEMPERED GLASS ALUMINUM FRAME

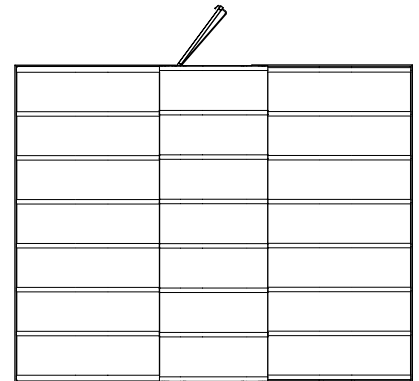
* SEE MANUFACTURER FOR COLOR AND SECURITY OPTIONS.

NOTES:

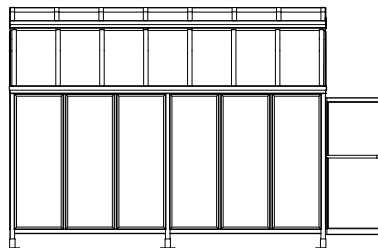
1. INSTALLATION TO BE COMPLETED IN ACCORDANCE WITH MANUFACTURER'S SPECIFICATIONS.
2. DO NOT SCALE DRAWING.
3. THIS DRAWING IS INTENDED FOR USE BY ARCHITECTS, ENGINEERS, CONTRACTORS, CONSULTANTS AND DESIGN PROFESSIONALS FOR PLANNING PURPOSES ONLY. THIS DRAWING MAY NOT BE USED FOR CONSTRUCTION.
4. ALL INFORMATION CONTAINED HEREIN WAS CURRENT AT THE TIME OF DEVELOPMENT BUT MUST BE REVIEWED AND APPROVED BY THE PRODUCT MANUFACTURER TO BE CONSIDERED ACCURATE.
5. CONTRACTOR'S NOTE: FOR PRODUCT AND COMPANY INFORMATION VISIT www.CADdetails.com/info AND ENTER REFERENCE NUMBER 5001-001



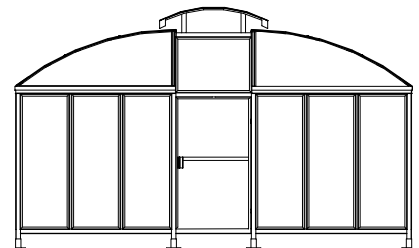
ISOMETRIC VIEW



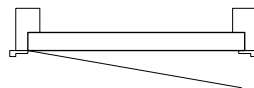
PLAN VIEW



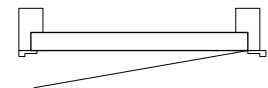
SIDE ELEVATION



FRONT ELEVATION



RIGHT-HAND OUTSWING



LEFT-HAND OUTSWING

DIMENSIONS: (WIDTH & CLEAR HEIGHT WILL DEPEND ON BIKE RACKS REQUIRED)

GUARDIAN 20: 14' - 10" L

GUARDIAN 30: 21' - 10" L

GUARDIAN 40: 29' - 4" L

* ADDITIONAL SIZES AVAILABLE UPON REQUEST

