

**Transit** is a durable, anodized aluminum shelter designed to protect bikes from the elements even in extreme weather conditions. With thousands installed nationwide, the Transit shelter has gained wide acceptance from businesses, universities, transit companies, government agencies and more.

Class 2 Bike Shelter: Semi-enclosed, canopy style

- Prefabricated modular sections for quick assembly
- Hip, Gable, Barrel or Flat roof styles
- Strong, shatterproof glass wall panels
- Enclosed on 3 sides for enhanced weather protection



Transit (Hip Roof)

### GENERAL INFORMATION

**Frame:** 6063-T52 Alloy Aluminum fabricated with Integrated Water Drainage

**Finish:** Anodized  Dark Bronze or  Clear (Silver)

**Roof Styles/Materials:**

**HIP ROOF:** 6 mm Twinwall Polycarbonate, UV Coated or Standing Seam Aluminum

**GABLE ROOF:** 6 mm Twinwall Polycarbonate, UV Coated or Standing Seam Aluminum

**BARREL ROOF:** 6 mm Twinwall Polycarbonate, UV Coated

**FLAT ROOF:** 1/4" Endurex 300

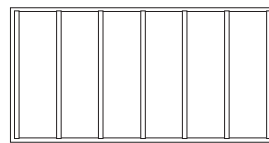
**Wall Panels:** 1/4" Tempered Glass

**Installation:** Anchor securely to level, concrete pad

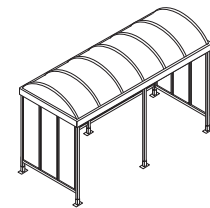
**Bike Racks:** Not included

### VIEWS

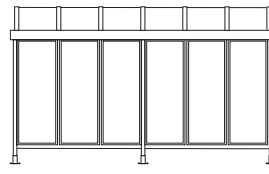
(Shown: Barrel Roof)



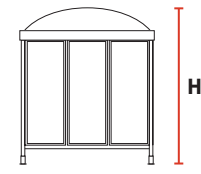
TOP



ISOMETRIC



L  
FRONT



W  
SIDE



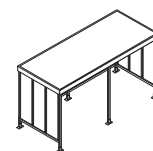
Hip Roof



Barrel Roof



Gable Roof



Flat Roof

Transit 7	Length	Width	Roof Height			Bikes (Max.)	Bikes (Max.)
<i>Transit 7 - Clear height 7'</i>			HIP & GABLE ROOF	BARREL ROOF	FLAT ROOF	MAX- RACK STAND	U-RACKS
Transit 7-10 - Single	14' 7 1/2"	7' 5"	9' 4"	8' 10"	7' 6"	10	5
Transit 7-20 - Double	29' 4"	7' 7"	9' 4"	8' 10"	7' 6"	20	10
Transit 7-30 - Triple	43' 10"	7' 7"	9' 4"	8' 10"	7' 6"	30	15

\*Bike capacity varies with rack style



Transit (Hip Roof)



Transit (Barrel Roof)



Transit (Barrel Roof w/ Ad Box)

### OPTIONS/ACCESSORIES

- Custom Branding, Graphics and Signage
- Illuminated Ad/Graphics Box
- Solar Lighting
- Public Bike Repair Accessories
- Powder Coating in RAL or Custom Colors

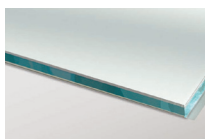
### FRAME FINISHES

Anodized Aluminum, 6063-T52 Alloy



### WALL PANELS

1/4" Tempered Glass, Clear

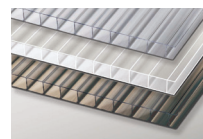


Tempered glass is stronger and safer than regular glass. It is also shatterproof.

### ROOF



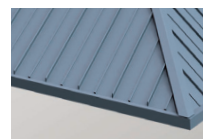
6mm Twinwall Polycarbonate, UV Coated / Roof: **HIP | GABLE | BARREL**



Translucent sheets with ribbed core. Impact resistant and light weight.

Clear (80% Light Transmission)  
White (45% Light Transmission)  
Bronze Tint (45% Light Transmission)

Standing Seam Aluminum / Roof: **HIP | GABLE**



Finished aluminum panels with ribbed profile are exceptionally durable, rustproof, fade resistant and easy to maintain. Colors available.

1/4" Endurex 300 / Roof: **FLAT**



Features Aluminum on both sides of a solid thermoplastic core. Endurex 300 combines all the best features of moisture and impact resistance with excellent rigidity.

Black or Silver