



velodomeselters

VELODOME SHELTERS
32 ANN ST
CLIFTON, NJ 07013
TOLL FREE: 1-888-995-8090
PHONE: (973) 264-9100
www.velodomeselters.com

☒ SELECT DESIRED MODEL:

- ☐ 7' CLEAR (HORIZONTAL RACKS)
☐ 8' CLEAR (VERTICAL RACKS)

☒ SELECT DESIRED FINISH:

- ☐ ANODIZED DARK BRONZE
☐ ANODIZED CLEAR (SILVER)

☒ SELECT DESIRED ROOF POLYCARBONATE COLOR:

- ☐ CLEAR
☐ BRONZE TINT
☐ WHITE

☒ SELECT DESIRED ROOF STYLE:

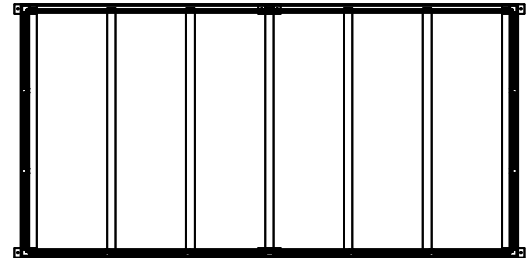
- ☐ BARREL
☐ HIP
☐ GABLE
☐ STANDING SEAM - HIP OR GABLE ONLY

☒ SELECT DESIRED LIGHTING:

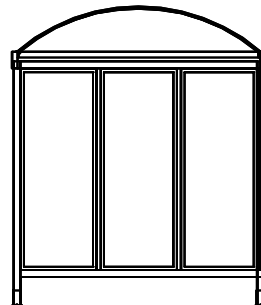
- ☐ SOLAR LIGHTING

☒ SELECT DESIRED GRAPHICS:

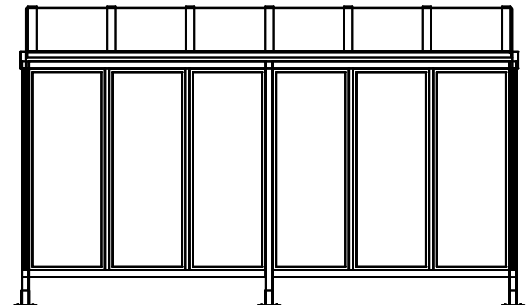
- ☐ BIKE PARKING VINYL SIGN
☐ CUSTOM VINYL SIGN



PLAN VIEW



SIDE ELEVATION



FRONT ELEVATION

SPECIFICATIONS:

FRAME: DARK BRONZE ANODIZED ALUMINUM

ROOF: TWIN WALL, 6MM BRONZE POLYCARBONATE, INTERNAL RAIN GUTTERS

SIDES: 1/4" TEMPERED GLASS; CLEAR

*BICYCLE RACKS ARE NOT INCLUDED WITH SHELTER

DIMENSIONS:

(HEIGHT WILL DEPEND ON BIKE RACKS REQUIRED)

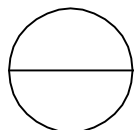
TRANSIT SINGLE: 14'-7 1/2" L X 7'-5" W

TRANSIT DOUBLE: 29'-1/2" L X 7'-5" W

TRANSIT TRIPLE: 43'- 5 1/2" L X 7'-5" W

NOTES:

1. SEE MANUFACTURER FOR MORE COLOR OPTIONS.
2. INSTALLATION TO BE COMPLETED IN ACCORDANCE WITH MANUFACTURER'S SPECIFICATIONS.
3. DO NOT SCALE DRAWING.
4. THIS DRAWING IS INTENDED FOR USE BY ARCHITECTS, ENGINEERS, CONTRACTORS, CONSULTANTS AND DESIGN PROFESSIONALS FOR PLANNING PURPOSES ONLY. THIS DRAWING MAY NOT BE USED FOR CONSTRUCTION.
5. ALL INFORMATION CONTAINED HEREIN WAS CURRENT AT THE TIME OF DEVELOPMENT BUT MUST BE REVIEWED AND APPROVED BY THE PRODUCT MANUFACTURER TO BE CONSIDERED ACCURATE.
6. CONTRACTOR'S NOTE: FOR PRODUCT AND COMPANY INFORMATION VISIT www.CADdetails.com/info AND ENTER REFERENCE NUMBER 5001-004.



BIKE SHELTER

TRANSIT