



velodomeselters

VELODOME SHELTERS
32 ANN ST
CLIFTON, NJ 07013
TOLL FREE: 1-888-995-8090
PHONE: (973) 264-9100
www.velodomeselters.com

- SELECT DESIRED MODELS:
 - 7' CLEAR, (HORIZONTAL RACKS)
 - 8' CLEAR, (VERTICAL RACKS)

- SELECT DESIRED FINISH:
 - ANODIZED DARK BRONZE
 - ANODIZED CLEAR (SILVER)

- SELECT DESIRED ROOF POLYCARBONATE COLOR:
 - CLEAR
 - BRONZE TINT
 - WHITE

- SELECT DESIRED ROOF:
 - BARREL
 - GABLE
 - STANDING SEAM - GABLE ONLY

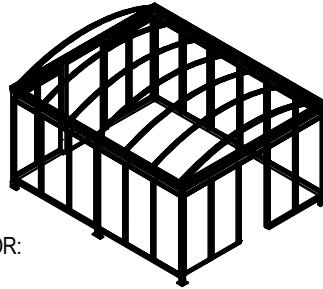
- SELECT DESIRED SIDE PANELS:
 - 1/4" TEMPERED GLASS
 - STAINLESS STEEL WIRE GRID

- SELECT OPTIONAL LIGHTING:
 - SOLAR LIGHTING

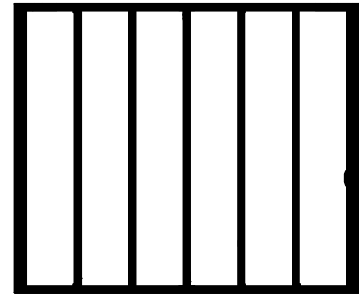
- SELECT OPTIONAL GRAPHICS:
 - BIKE PARKING VINYL SIGN
 - CUSTOM VINYL SIGN

- SELECT DESIRED ACCESS CONTROL:
 - KEY LOCK
 - OTHER

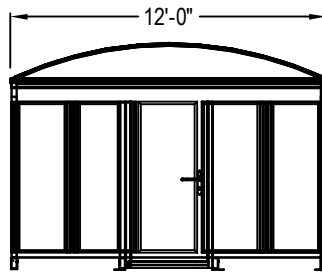
- SELECT DESIRED DOOR SWING:
 - RIGHT-HAND OUTSWING
 - LEFT-HAND OUTSWING



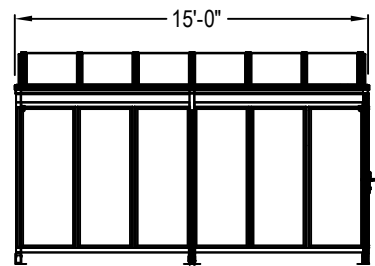
ISOMETRIC VIEW



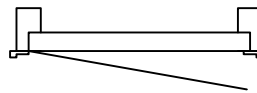
PLAN VIEW



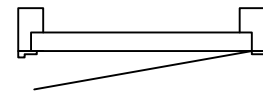
SIDE ELEVATION



FRONT ELEVATION



RIGHT-HAND OUTSWING



LEFT-HAND OUTSWING

PROFESSIONAL ENGINEERING REPORT

- ACCEPTED
- DECLINED

SPECIFICATIONS:

FRAME: 6063-T52 ALLOY, ALUMINUM; ANODIZED FINISH
ROOF: TWIN WALL, 6MM POLYCARBONATE, UV PROTECTION
DOOR: 42" TEMPERED GLASS ALUMINUM FRAME

DIMENSIONS: (WIDTH & CLEAR HEIGHT WILL DEPEND ON BIKE RACKS REQUIRED)

PEAPOD 10: 14'-7 1/2" L X 12'-4" W
PEAPOD 15: 21'-10" L X 12'-4" W
PEAPOD 20: 29'- 1/2" L X 12'-4" W
*ADDITIONAL SIZES AVAILABLE

NOTES:

1. SEE MANUFACTURER FOR COLOR AND SECURITY OPTIONS.
2. INSTALLATION TO BE COMPLETED IN ACCORDANCE WITH MANUFACTURER'S SPECIFICATIONS.
3. DO NOT SCALE DRAWING.
4. THIS DRAWING IS INTENDED FOR USE BY ARCHITECTS, ENGINEERS, CONTRACTORS, CONSULTANTS AND DESIGN PROFESSIONALS FOR PLANNING PURPOSES ONLY. THIS DRAWING MAY NOT BE USED FOR CONSTRUCTION.
5. ALL INFORMATION CONTAINED HEREIN WAS CURRENT AT THE TIME OF DEVELOPMENT BUT MUST BE REVIEWED AND APPROVED BY THE PRODUCT MANUFACTURER TO BE CONSIDERED ACCURATE.
6. CONTRACTOR'S NOTE: FOR PRODUCT AND COMPANY INFORMATION VISIT www.CADdetails.com/info AND ENTER REFERENCE NUMBER 5001-003.

