

SpaceMaker is the next generation in secure, universal bike parking. Easy-in and easy-out makes it accessible to all users. SpaceMaker's unique geometry achieves higher density and tangle-free storage in a small footprint. Lock bars are manufactured in solid steel for extra security and angled forward for easy access. Use freestanding or bolt into concrete.

Horizontal Bike Rack: High density

- Heavy-duty construction w/solid steel lock bars
- Modular for side-by-side connection
- Indoor/outdoor use
- Accessible to users of all ages



SM-3-LHL

GENERAL INFORMATION

Frame: 11 Gauge x 1 1/2" Steel Angle

Wheel Cradles: 11 Gauge, 1" Dia. Steel Tube

Lock Bars: 1" Dia. Solid Steel Rod

Finish: Powder Coated TGIC Polyester Paint ■ RAL 9005/Jet Black
Custom colors available

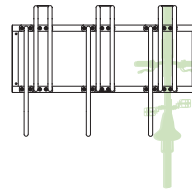
Installation: May be used freestanding; Anchoring to level concrete pad is recommended; Stagger rack positions (high/low)

DIMENSIONS/CAPACITY

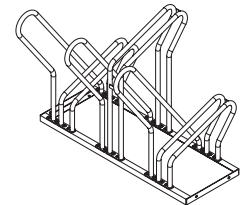
SpaceMaker	Length	Width	Height	Spacing	Bikes
SM-3-HLH (Part A)	45"	31 1/2"	34 1/2"	15"	3
SM-3-LHL (Part B)	45"	31 1/2"	34 1/2"	15"	3
SM-2-LH (Part C)	30"	31 1/2"	34 1/2"	15"	2

Rack Position: **H**=High **L**=Low

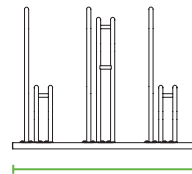
VIEWS



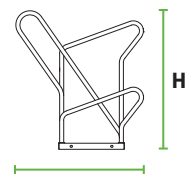
TOP



ISOMETRIC



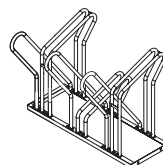
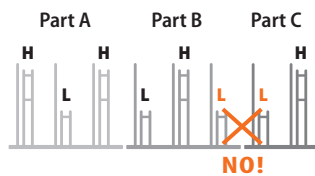
FRONT



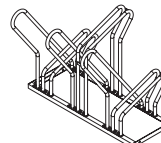
SIDE

ABUTTING UNITS:

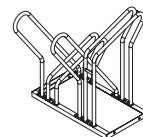
Alternate High & Low rack positions



SM-3-HLH
(Part A)



SM-3-LHL
(Part B)



SM-2-LH
(Part C)



velodomeselters

BIKE PARKING SOLUTIONS Bike Shelters | Bike Racks | Bike Storage Systems

888-995-8090

32 Ann Street Clifton, NJ 07013

info@velodomeselters.com

www.velodomeselters.com

